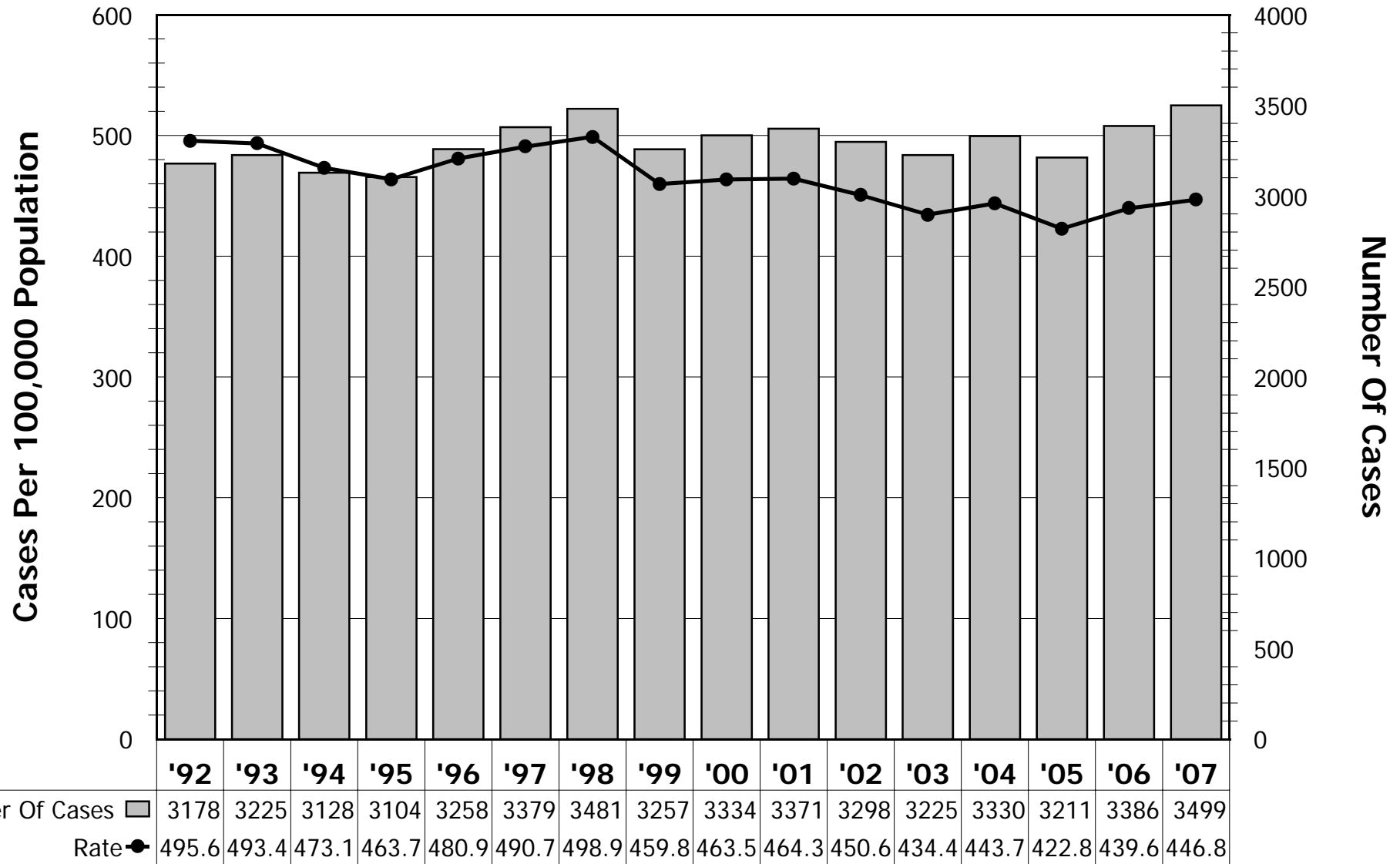


Incidence Of Cancer (All Cancer Sites)

San Mateo County, 1992-2007

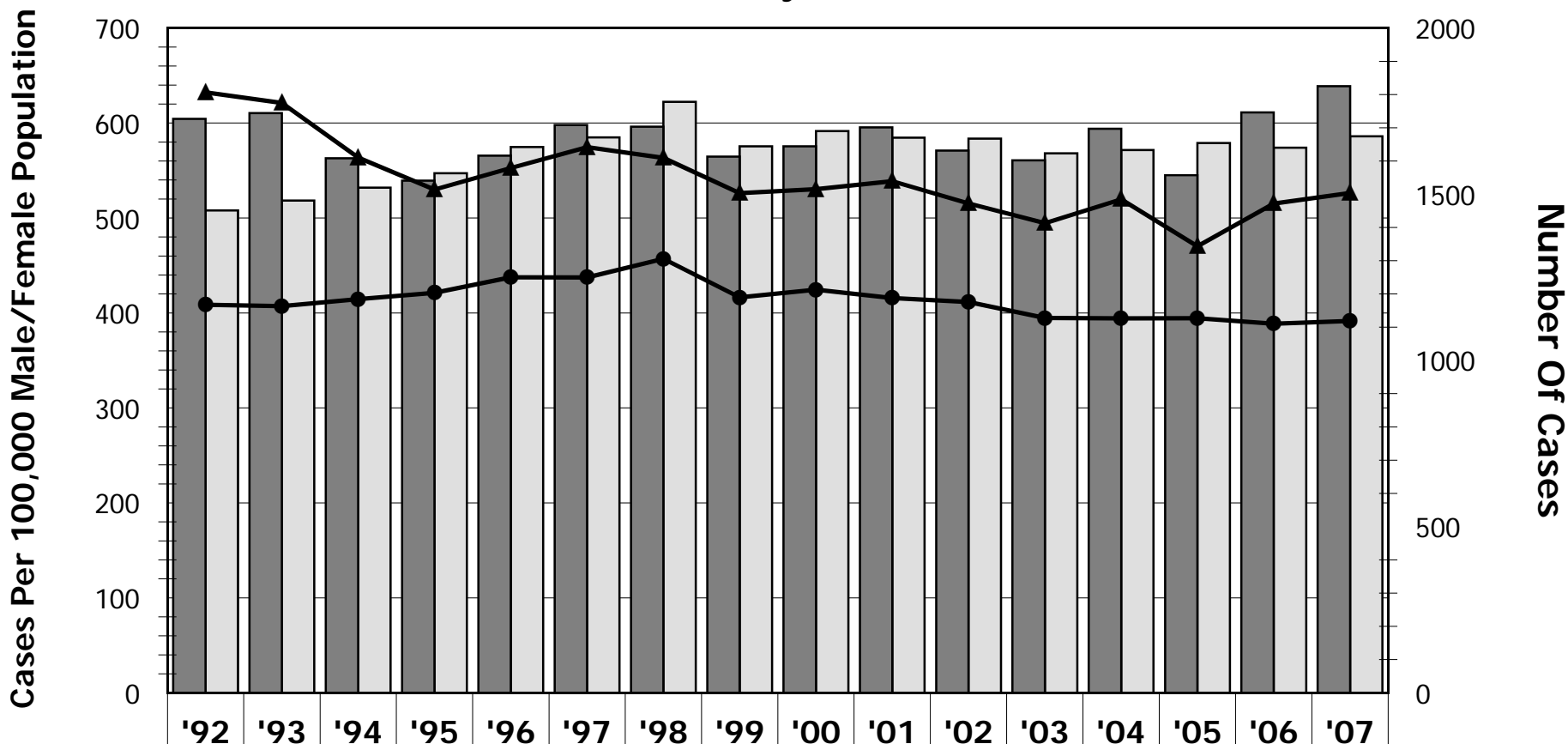


Rates are age-adjusted and standardized to Year 2000 population. Only invasive cancers (not *in situ*) are counted in the incidence calculation.

Source Data: Surveillance, Epidemiology, and End Results (SEER) Program (www.seer.cancer.gov) SEER*Stat Database: Incidence - SEER 13 Regs Research Data, Nov 2009.

Incidence Of Cancer By Sex (All Cancer Sites)

San Mateo County, 1992-2007

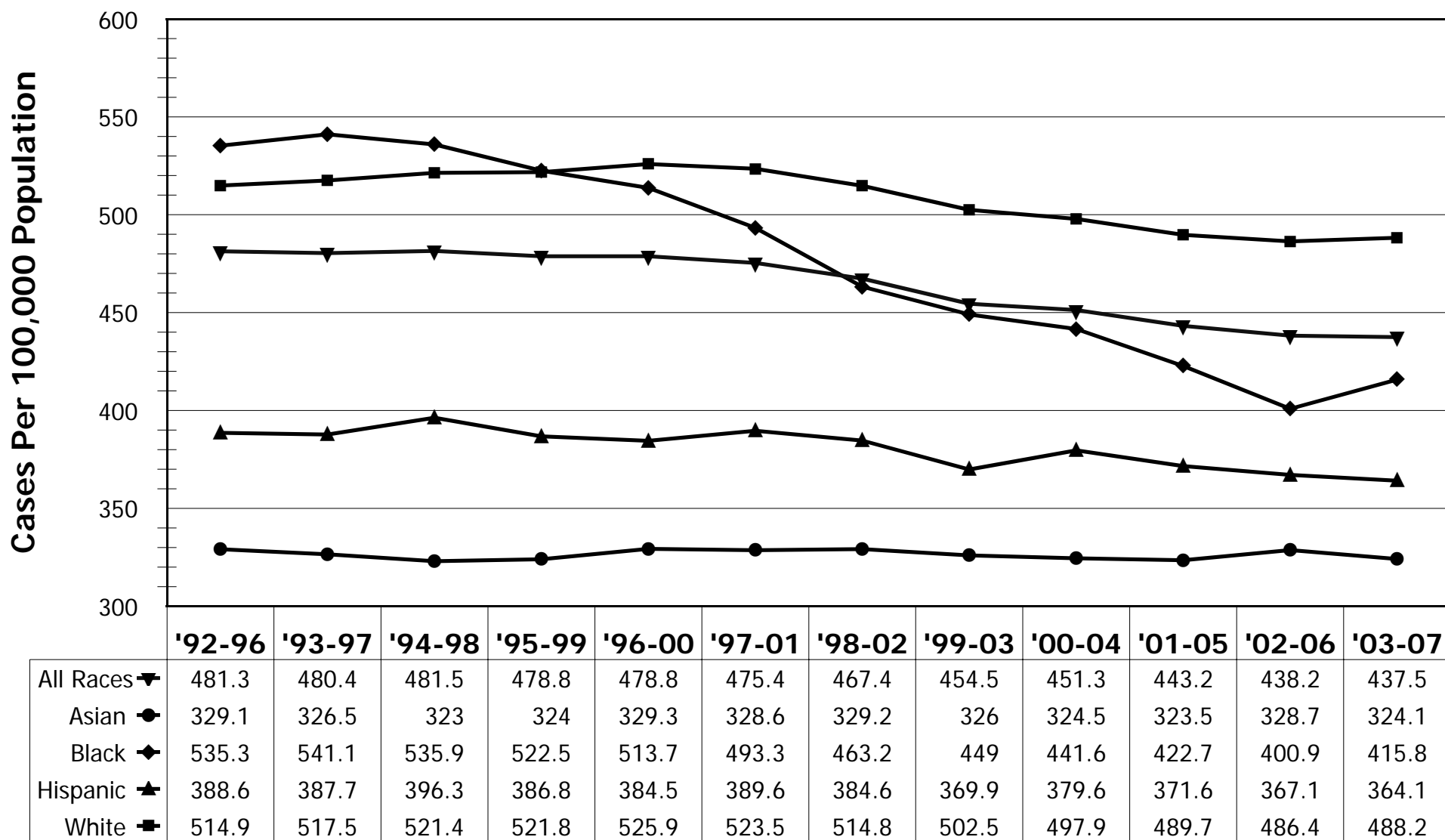


	'92	'93	'94	'95	'96	'97	'98	'99	'00	'01	'02	'03	'04	'05	'06	'07
All Cases	495.6	493.4	473.1	463.7	480.9	490.7	498.9	459.8	463.5	464.3	450.6	434.4	443.7	422.8	439.6	446.8
Number Male	1727	1744	1608	1541	1616	1708	1703	1613	1644	1701	1631	1602	1697	1557	1746	1825
Rate Male	632.2	621.1	563.6	529.9	552.6	574.6	563.3	526.1	530.3	538.7	515.3	494.5	519.7	470.2	515.1	526.3
Number Female	1451	1481	1520	1563	1642	1671	1778	1644	1690	1670	1667	1623	1633	1654	1640	1674
Rate Female	408.6	407.2	414.6	421.2	437.6	437.4	457.1	416.4	424.5	415.7	411.5	394.7	394.3	394.4	388.6	391.5

Rates are age-adjusted and standardized to Year 2000 population. Only invasive cancers (not *in situ*) are counted in the incidence calculation. Source Data: Surveillance, Epidemiology, and End Results (SEER) Program (www.seer.cancer.gov) SEER*Stat Database: Incidence - SEER 13 Regs Research Data, Nov 2009.

Incidence Of Cancer By Race/Ethnicity (All Cancer Sites)

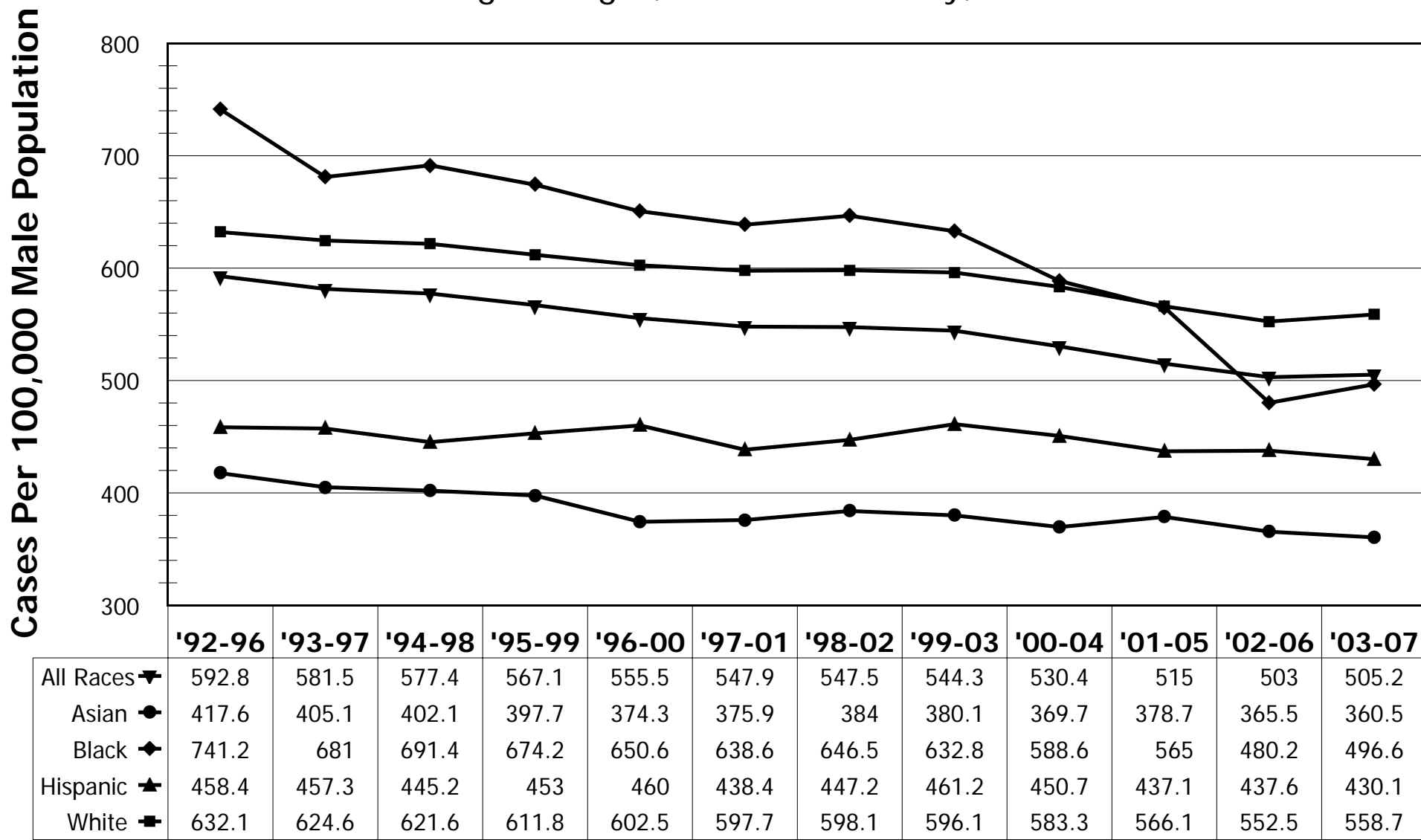
5-Year Moving Averages, San Mateo County, 1992-2007



Rates are age-adjusted and standardized to Year 2000 population. Only invasive cancers (not *in situ*) are counted in the incidence calculation.
 Source Data: Surveillance, Epidemiology, and End Results (SEER) Program (www.seer.cancer.gov) SEER*Stat Database: Incidence - SEER 13 Regs Research Data, Nov 2009

Incidence Of Cancer In Males By Race/Ethnicity (All Cancer Sites)

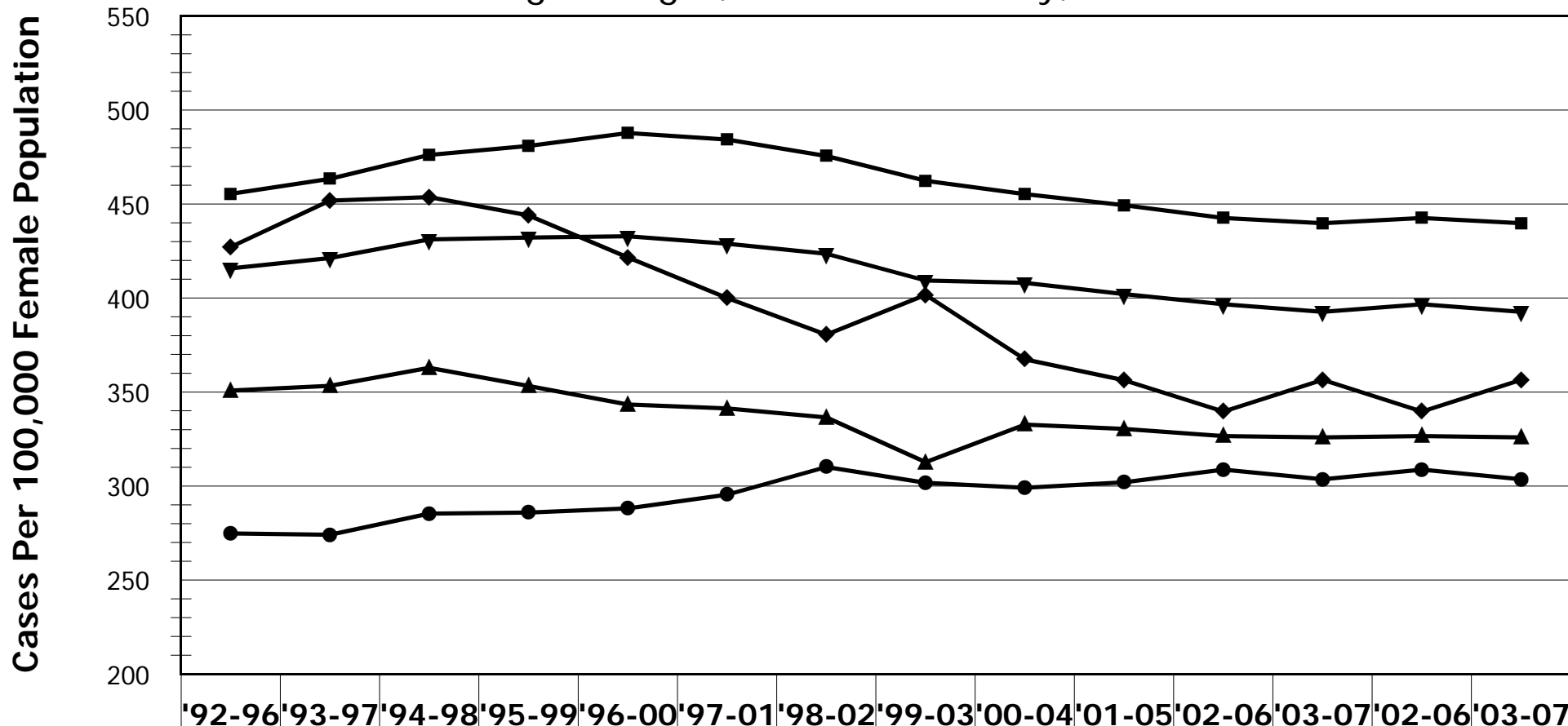
5-Year Moving Averages, San Mateo County, 1992-2007



Rates are age-adjusted and standardized to Year 2000 population. Only invasive cancers (not *in situ*) are counted in the incidence calculation.
 Source Data: Surveillance, Epidemiology, and End Results (SEER) Program (www.seer.cancer.gov) SEER*Stat Database: Incidence - SEER 17 Regs Public-Use, Nov 2009

Incidence Of Cancer In Females By Race/Ethnicity (All Cancer Sites)

5-Year Moving Averages, San Mateo County, 1992-2007



	'92-96	'93-97	'94-98	'95-99	'96-00	'97-01	'98-02	'99-03	'00-04	'01-05	'02-06	'03-07	'02-06	'03-07
All Races ▼	415.8	421.3	431.2	432.2	432.9	428.9	423.6	409.3	408.1	402.1	396.7	392.7	396.7	392.7
Asian ●	274.8	274.1	285.3	285.9	288.1	295.4	310.1	301.7	299.1	302	308.7	303.6	308.7	303.6
Black ◆	427.2	451.8	453.7	444	421.6	400	380.5	401.7	367.4	356.3	339.6	356.5	339.6	356.5
Hispanic ▲	350.8	353.3	362.9	353.2	343.4	341.3	336.5	312.7	332.7	330.4	326.6	325.9	326.6	325.9
White ■	455.4	463.4	476.1	480.9	487.8	484.3	475.6	462.4	455.3	449.4	442.6	439.8	442.6	439.8

Rates are age-adjusted and standardized to Year 2000 population. Only invasive cancers (not *in situ*) are counted in the incidence calculation.

Source Data: Surveillance, Epidemiology, and End Results (SEER) Program (www.seer.cancer.gov) SEER*Stat Database: Incidence - SEER 17 Regs Public-Use, Nov 2009

Prevalence Of Cancer By Selected Cancer Type

Cumulative Data, San Mateo County, 2003-2007

Type of Cancer	Total Cases 1998-2002	Total Cases 2003-2007	Average Annual Number 1998-2002	Average Annual Number 2003-2007	Age-Adjusted Rate (95% CI) 2003-2007
Breast (with in situ)*	3756	3498	751	700	167.8 (162.2 - 173.5)**
Breast (not in situ)*	2930	2694	586	539	128.7 (123.9 - 133.7)**
Prostate*	2455	2543	491	509	150.9 (145.0 - 157.0)**
Lung	1993	1902	399	380	50.6 (48.3 - 52.9)
Colorectal (w/ in situ)	1933	1753	387	351	45.9 (43.7 - 48.1)
Colorectal (not in situ)	1841	1639	368	328	42.9 (40.8 - 45.1)
Skin (w/ in situ)	1204	1346	241	269	34.9 (33.1 - 36.9)
Skin (not in situ)	690	817	138	163	21.3 (19.8 - 22.8)
NH Lymphoma	761	792	152	158	21.0 (19.6 - 22.5)
Bladder	688	765	138	153	20.3 (18.9 - 21.8)
Kidney	357	501	71	100	13.3 (12.1 - 14.5)
Uterine* (w/ in situ)	505	483	101	97	22.8 (20.8 - 25.0)**
Uterine* (not in situ)	501	481	100	96	22.7 (20.7 - 24.8)**
Pancreatic	394	440	79	88	11.5 (10.4 - 12.6)
Leukemia	437	420	87	84	11.4 (10.3 - 12.5)
Oropharyngeal (w/ in situ)	323	392	65	78	10.2 (9.2 - 11.3)
Oropharyngeal (not in situ)	307	381	61	76	10.0 (9.0 - 11.0)
Liver	188	325	38	65	8.3 (7.4 - 9.3)
Thyroid	259	311	52	62	8.3 (7.4 - 9.3)
Stomach	318	289	64	58	7.6 (6.7 - 8.5)
Ovarian*	315	265	63	53	12.7 (11.2 - 14.4)**
Brain	197	220	39	44	5.9 (5.2 - 6.8)
Multiple Myeloma	175	198	35	40	5.2 (4.5 - 6.0)
Esophageal	140	138	28	28	3.7 (3.1 - 4.3)
Cervical*	137	115	27	23	5.8 (4.8 - 7.0)**
Hodgkin's Lymphoma	81	89	16	18	2.5 (2.0 - 3.1)

Rates are age-adjusted, standardized to Year 2000 population, and are cumulative for the five-year period 2003-2007; per 100,000 population

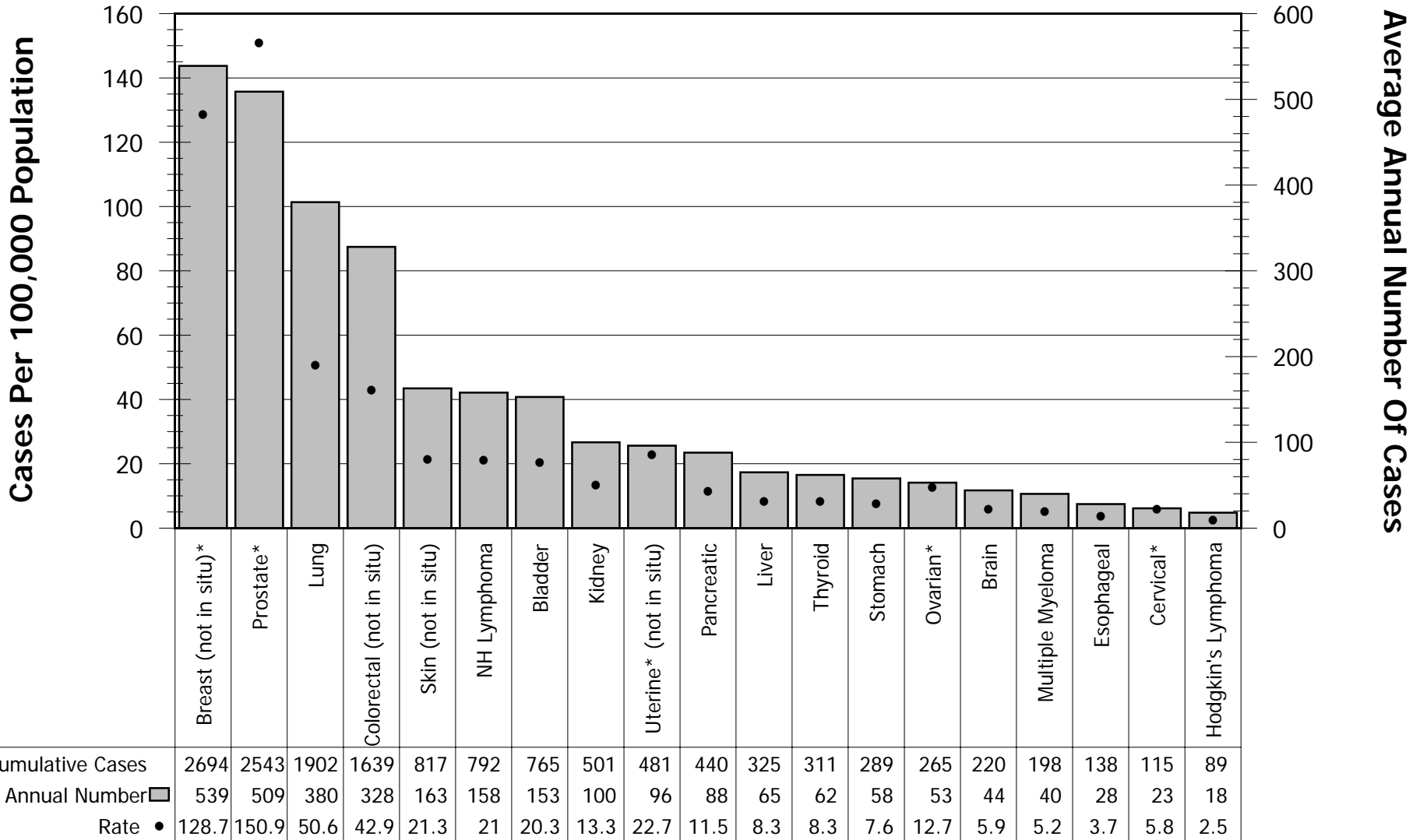
*Sex-specific counts for cancers affecting only males or only females(or female breast cancer)

**Sex-specific rates are also shown for cancers affecting only males or only females(or female breast cancer)

Source Data: Surveillance, Epidemiology, and End Results (SEER) Program (www.seer.cancer.gov) SEER*Stat Database: Incidence-SEER 13 Regs Research Data, Nov 2009

Prevalence Of Cancer By Selected Cancer Type

Cumulative Data, San Mateo County, 2003-2007



Rates are age-adjusted, standardized to Year 2000 population, and are cumulative for the five-year period 2003-2007

*Sex-specific counts and rates are shown for cancers affecting only males or only females (or female breast cancer)

Source Data: Surveillance, Epidemiology, and End Results (SEER) Program (www.seer.cancer.gov) SEER*Stat Database: Incidence - SEER 13 Regs Research Data, Nov 2009 Sub

Five Most Common Types Of Cancer By Sex

Cumulative Data, San Mateo County, 2003-2007

Rank	Both Sexes n (% of all cases) Rate (95% CI)	Males n (% of male cases) Rate (95% CI)	Females n (% of female cases) Rate (95% CI)
1	Breast 2718 (16.3%) 69.8 (67.1, 72.5)	Prostate 2543 (30.2%) 150.9 (145.0, 157.0)	Breast 2694 (32.8%) 128.7 (123.9, 133.7)
2	Prostate 2543 (15.3%) 67 (64.4, 69.7)	Lung 940 (11.2%) 58.1 (54.4, 62.0)	Lung 962 (11.7%) 45.2 (42.4, 48.2)
3	Lung 1902 (11.4%) 50.6 (48.3, 52.9)	Colorectal 816 (9.7%) 49.1 (45.8, 52.7)	Colorectal 823 (10.0%) 38.4 (35.8, 41.1)
4	Colorectal 1639 (9.8%) 42.9 (40.8, 45.1)	Bladder 578 (6.9%) 36.5 (33.6, 39.7)	Uterine 481 (5.8%) 22.7 (20.7, 24.8)
5	Skin 817 (4.9%) 21.3 (19.8, 22.8)	Skin 471 (5.6%) 27.7 (25.2, 30.3)	Non-Hodgkin's Lymphoma 359 (4.4%) 17.2 (15.4, 19.1)
Total (All Cancers)	16651	8427	8224

Rates are age-adjusted, standardized to Year 2000 population, and are cumulative for the five-year period 2003-2007; per 100,000 population
 Source Data: Surveillance, Epidemiology, and End Results (SEER) Program (www.seer.cancer.gov) SEER*Stat Database: Incidence - SEER 13 Regs Research Data, Nov 2009 Sub (1992-2007)

Five Most Common Types Of Cancer By Race/Ethnicity

Cumulative Data, San Mateo County, 2003-2007

Rank	Asian	Black	Hispanic	White
	N (% of cases) Rate (95% CI)	N (% of cases) Rate (95% CI)	N (% of cases) Rate (95% CI)	N (% of cases) Rate (95% CI)
1	Breast 515 (19.0%) 56.3 (51.5, 61.5)	Prostate 124 (21.0%) 82.4 (68.4, 98.6)	Prostate 258 (14.9%) 58.8 (51.7, 66.5)	Breast 1866 (16.3%) 79.2 (75.6, 83.0)
2	Prostate 369 (13.6%) 47.1 (42.3, 52.2)	Lung 106 (17.9%) 76.3 (62.3, 92.6)	Breast 253 (14.6%) 47.7 (41.8, 54.3)	Prostate 1739 (15.2%) 72.7 (69.3, 76.3)
3	Colorectal 331 (12.2%) 39.5 (35.3, 44.1)	Breast 75 (12.7%) 52.7 (41.3, 66.3)	Colorectal 187 (10.8%) 40.5 (34.6, 47.0)	Lung 1365 (11.9%) 56.0 (53.1, 59.2)
4	Lung 294 (10.8%) 38.5 (34.1, 43.3)	Colorectal 57 (9.6%) 41.5 (31.3, 54.0)	Lung 136 (7.8%) 32.5 (27.1, 38.5)	Colorectal 1057 (9.2%) 43.0 (40.4, 45.8)
5	Liver 133 (4.9%) 16.0 (13.3, 19.0)	Pancreas 26 (4.4%) 19.6 (12.7, 28.8)	Kidney 83 (4.8%) 17.0 (13.4, 21.2)	Skin 721 (6.3%) 32.1 (29.7, 34.7)
Total (All Cancers)	2710	591	1736	11457

Rates are age-adjusted, standardized to Year 2000 population, and are cumulative for the five-year period 2003-2007; per 100,000 population
 Source Data: Surveillance, Epidemiology, and End Results (SEER) Program SEER*Stat Database: Incidence - SEER 13 Regs Research Data, Nov 2009

Five Most Common Types Of Cancer In Males By Race/Ethnicity

Cumulative Data, San Mateo County, 2003-2007

Rank	Asian	Black	Hispanic	White
	N (% of cases) Rate (95% CI)	N (% of cases) Rate (95% CI)	N (% of cases) Rate (95% CI)	N (% of cases) Rate (95% CI)
1	Prostate 369 (29.7%) 111.1 (99.6, 123.5)	Prostate 124 (38.5%) 182.3 (150.9, 218.3)	Prostate 258 (31.0%) 144.2 (126.3, 163.8)	Prostate 1739 (29.3%) 158.9 (151.5, 166.7)
2	Lung 159 (12.8%) 49.3 (41.6, 58.0)	Lung 60 (18.6%) 97.3 (73.5, 126.3)	Colorectal 83 (10.0%) 42.2 (33.0, 53.0)	Lung 657 (11.1%) 61.5 (56.8, 66.4)
3	Colorectal 153 (12.3%) 41.4 (34.8, 48.9)	Colorectal 22 (6.8%) 36.3 (22.2, 55.8)	Lung 61 (7.3%) 36.9 (27.8, 47.9)	Colorectal 554 (9.3%) 51.9 (47.7, 56.5)
4	Liver 96 (7.7%) 25.7 (20.6, 31.7)	Pancreas 14 (4.3%) 22.4 (12.0, 38.0)	Bladder 45 (5.4%) 30.7 (22.0, 41.1)	Bladder 481 (8.1%) 45.5 (41.4, 49.8)
5	Non-Hodgkin's Lymphoma 67 (5.4%) 19.9 (15.2, 25.6)	Kidney 14 (4.3%) 19.5 (10.6, 33.3)	Kidney 44 (5.3%) 21.9 (15.5, 30.0)	Skin 426 (7.2%) 40.3 (36.5, 44.5)
Total (All Cancers)	1241	322	833	5926

Rates are age-adjusted, standardized to Year 2000 population, and are cumulative for the five-year period 2003-2007; per 100,000 population

Source Data: Surveillance, Epidemiology, and End Results (SEER) Program (www.seer.cancer.gov) SEER*Stat Database: Incidence - SEER 13 Regs Research Data, Nov 2009

Five Most Common Types Of Cancer In Females By Race/Ethnicity

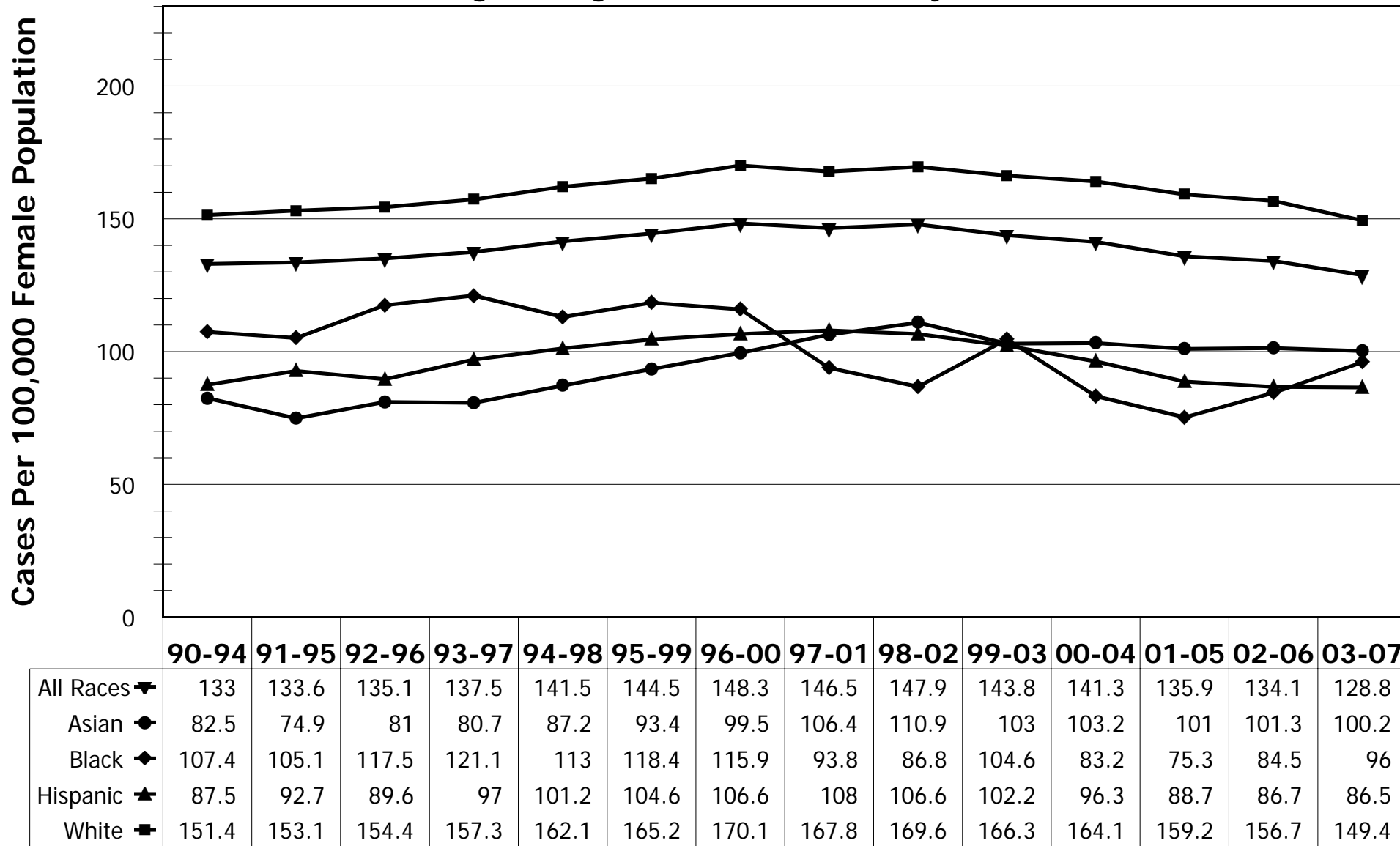
Cumulative Data, San Mateo County, 2003-2007

Rank	Asian	Black	Hispanic	White
	N (% of cases) Rate (95% CI)	N (% of cases) Rate (95% CI)	N (% of cases) Rate (95% CI)	N (% of cases) Rate (95% CI)
1	Breast 510 (34.7%) 100.9 (92.2, 110.2)	Breast 73 (27.1%) 97.3 (76.0, 123.0)	Breast 253 (28.0%) 86.5 (75.9, 98.0)	Breast 1849 (33.4%) 149.4 (142.5, 156.6)
2	Colorectal 178 (12.1%) 37.9 (32.4, 44.0)	Lung 46 (17.1%) 60.9 (44.5, 81.8)	Colorectal 104 (11.5%) 38.9 (31.6, 47.2)	Lung 708 (12.8%) 52.3 (48.4, 56.5)
3	Lung 135 (9.2%) 30.7 (25.7, 36.5)	Colorectal 35 (13.0%) 46.3 (32.1, 64.8)	Lung 75 (8.3%) 30.1 (23.6, 37.7)	Colorectal 503 (9.1%) 36.2 (33.0, 39.7)
4	Uterine 101 (6.9%) 19.2 (15.6, 23.5)	Uterine 20 (7.4%) 24.8 (15.1, 38.8)	Uterine 45 (5.0%) 16.6 (12.0, 22.2)	Uterine 311 (5.6%) 24.7 (22.0, 27.7)
5	Thyroid 72 (4.9%) 13.9 (10.8, 17.5)	Pancreas 12 (4.5%) 16.5 (8.5, 29.3)	Kidney 39 (4.3%) 13.9 (9.8, 19.1)	Skin 295 (5.3%) 26.5 (23.3, 30.0)
Total (All Cancers)	1469	269	903	5531

Rates are age-adjusted, standardized to Year 2000 population, and are cumulative for the five-year period 2003-2007; per 100,000 population
 Source Data: Surveillance, Epidemiology, and End Results (SEER) Program (www.seer.cancer.gov) SEER*Stat Database: Incidence - SEER 13 Regs Research Data, Nov 2009

Incidence Of Female Breast Cancer By Race/Ethnicity

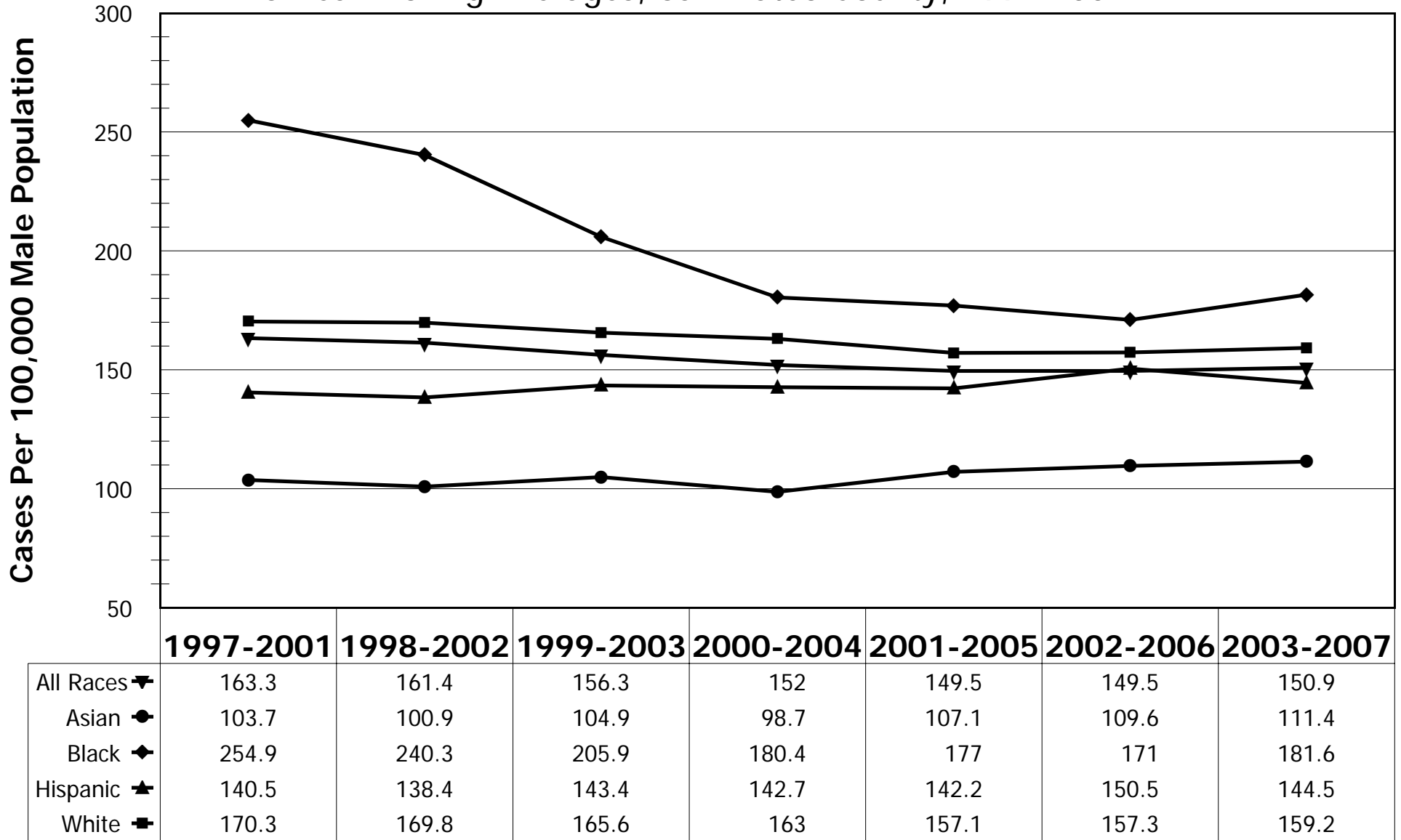
5-Year Moving Averages, San Mateo County, 1990-2007



Rates are age-adjusted and standardized to Year 2007 population
 Source Data: Northern California Cancer Center Registry, 1997-2007

Incidence Of Male Prostate Cancer By Race/Ethnicity

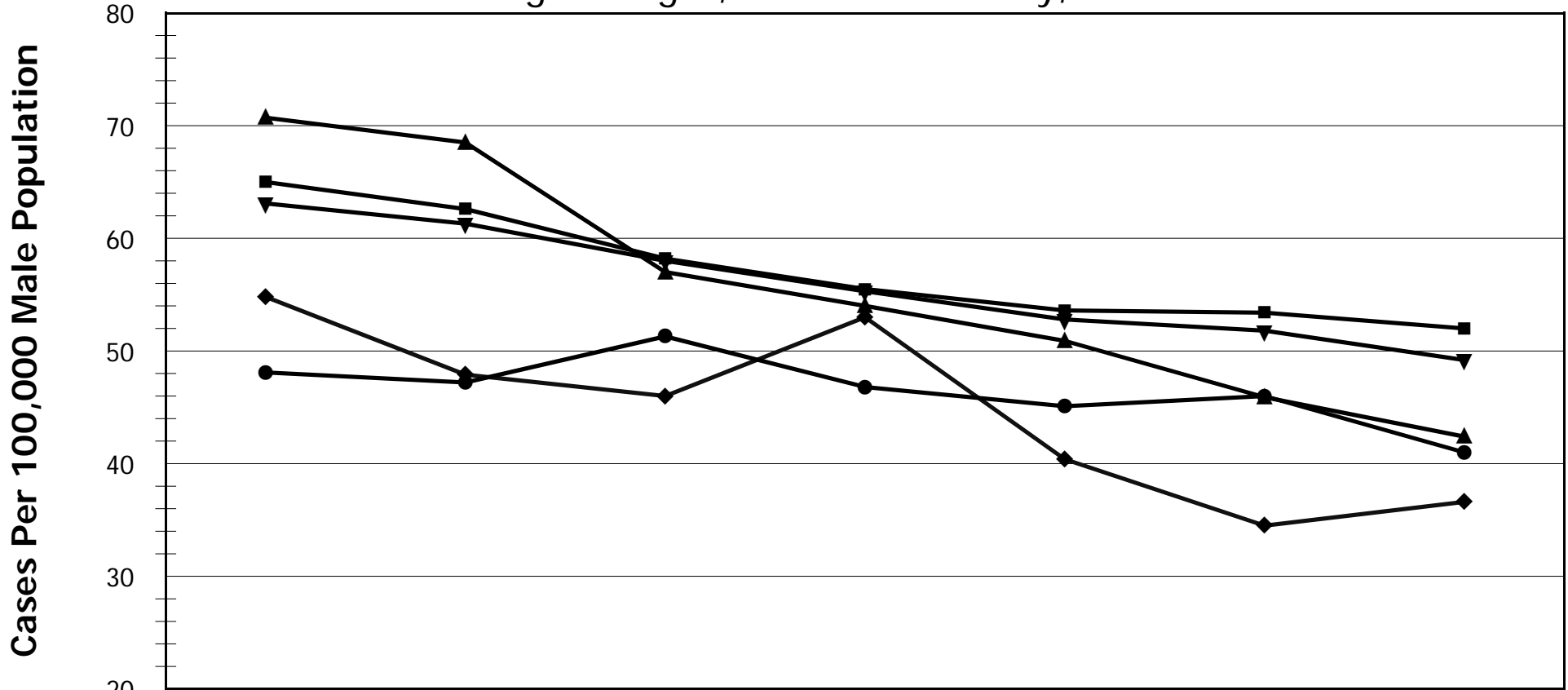
5-Year Moving Averages, San Mateo County, 1997-2007



Rates are age-adjusted and standardized to Year 2007 population
 Source Data: Northern California Cancer Center Registry, 1997-2007

Incidence Of Male Colorectal Cancer By Race/Ethnicity

5-Year Moving Averages, San Mateo County, 1997-2007

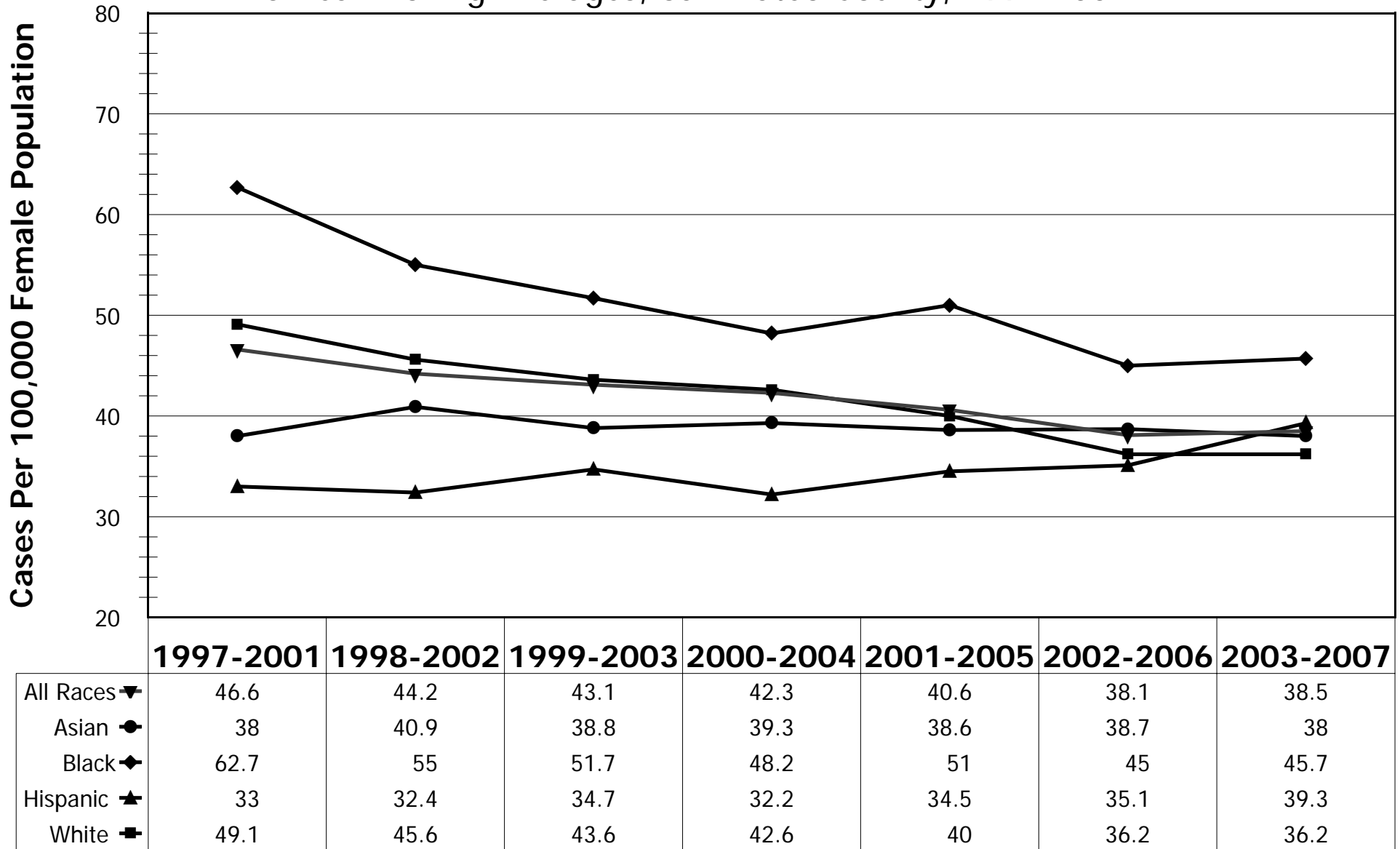


	1997-2001	1998-2002	1999-2003	2000-2004	2001-2005	2002-2006	2003-2007
All Races ▼	63.1	61.3	58	55.3	52.8	51.8	49.2
Asian ●	48.1	47.2	51.3	46.8	45.1	46	41
Black ◆	54.8	47.9	46	53	40.4	34.5	36.6
Hispanic ★	70.7	68.5	57	54	50.9	45.9	42.4
White ■	65	62.6	58.2	55.5	53.6	53.4	52

Rates are age-adjusted and standardized to Year 2007 population
 Source Data: Northern California Cancer Center Registry, 1997-2007

Incidence Of Female Colorectal Cancer By Race/Ethnicity

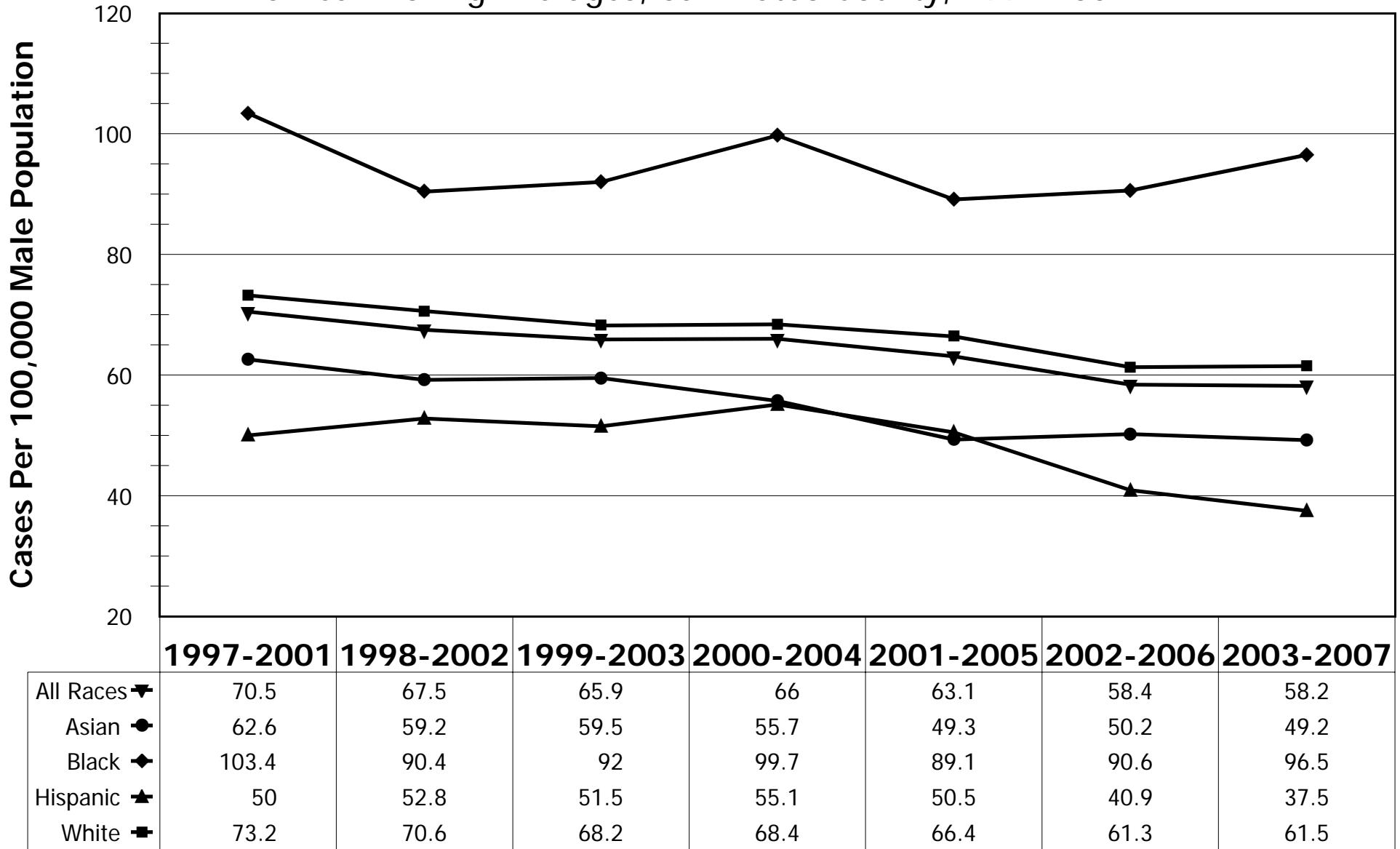
5-Year Moving Averages, San Mateo County, 1997-2007



Rates are age-adjusted and standardized to Year 2007 population
 Source Data: Northern California Cancer Center Registry, 1997-2007

Incidence Of Male Lung Cancer By Race/Ethnicity

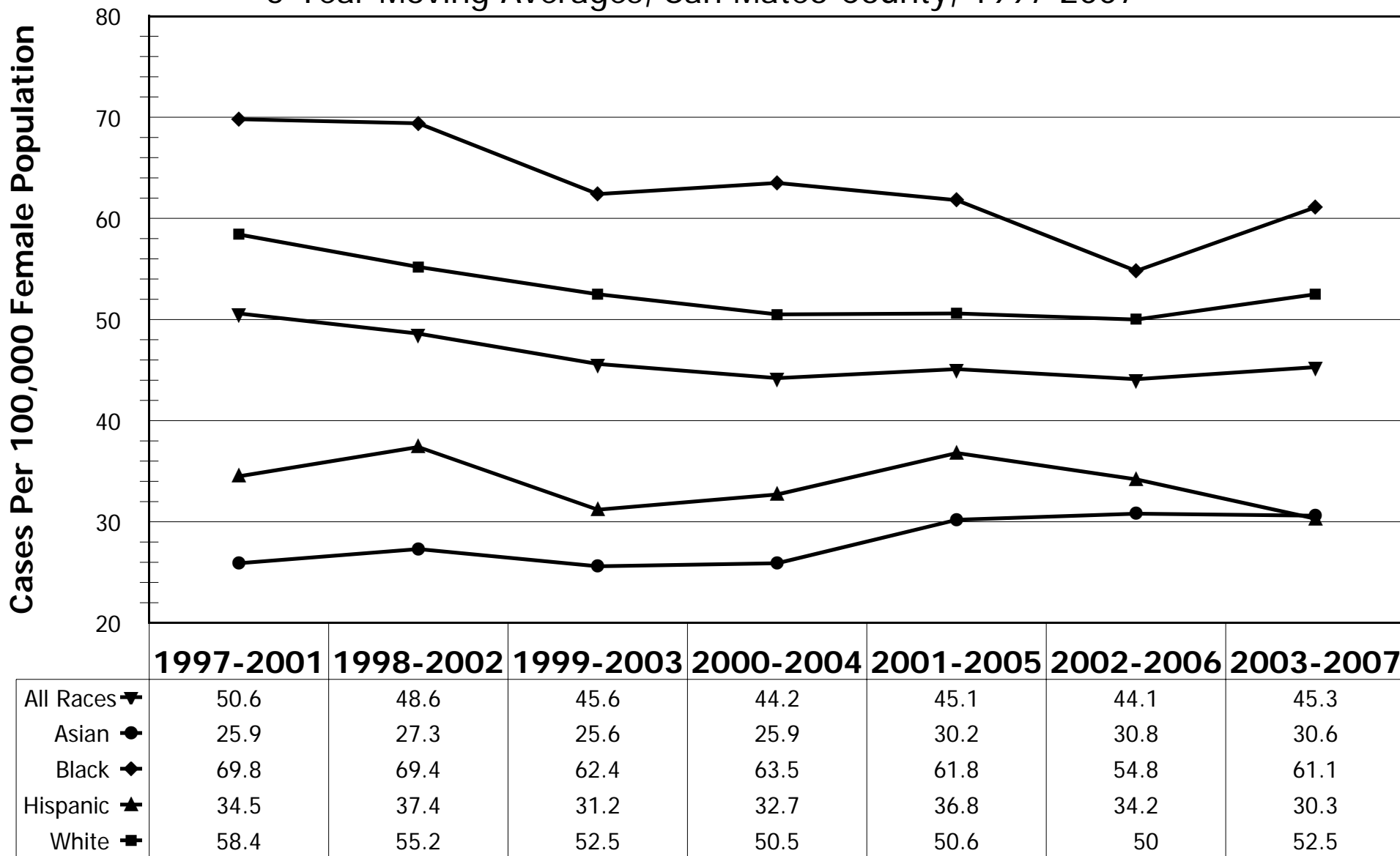
5-Year Moving Averages, San Mateo County, 1997-2007



Rates are age-adjusted and standardized to Year 2007 population
 Source Data: Northern California Cancer Center Registry, 1997-2007

Incidence Of Female Lung Cancer By Race/Ethnicity

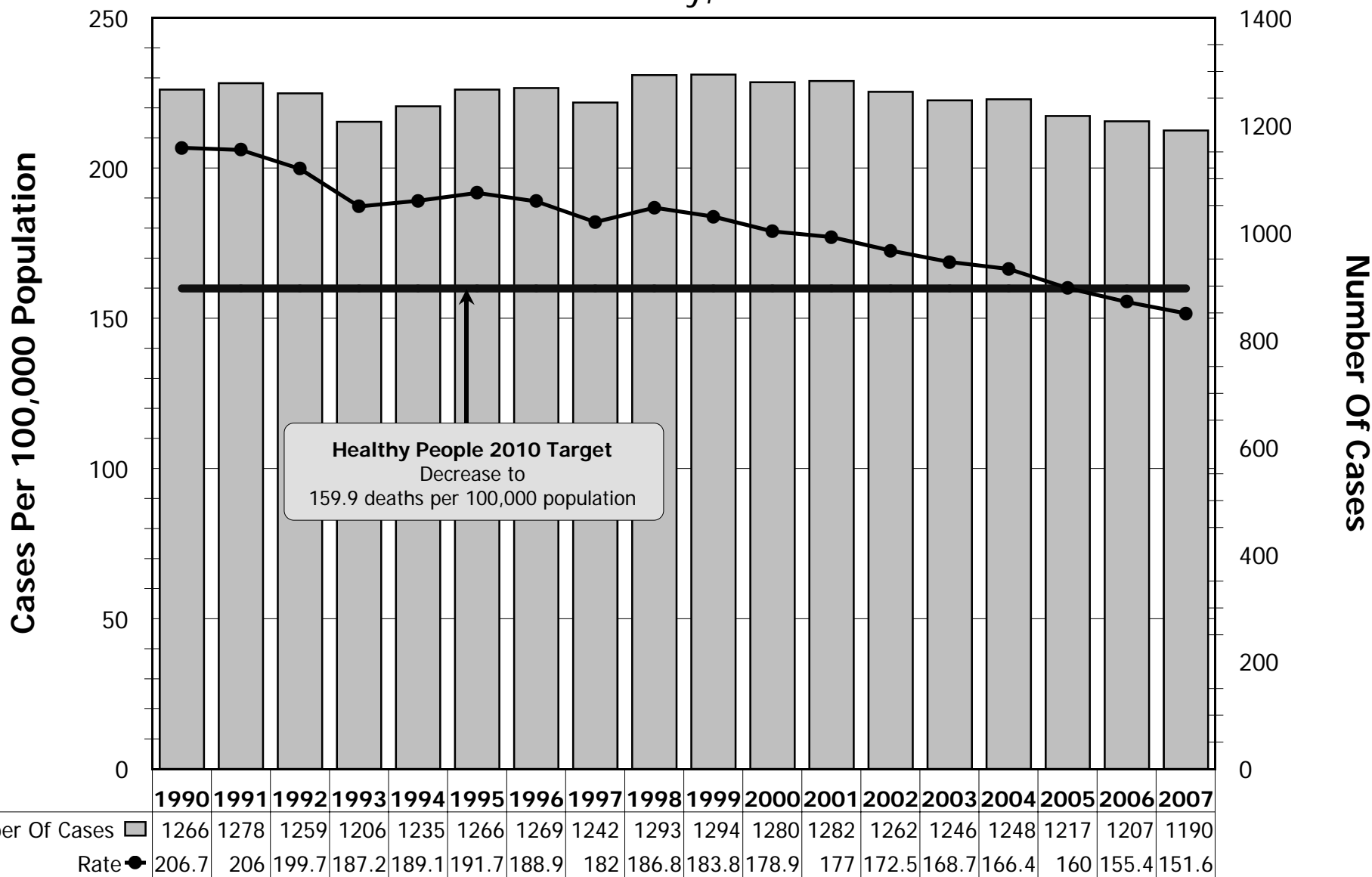
5-Year Moving Averages, San Mateo County, 1997-2007



Rates are age-adjusted and standardized to Year 2007 population
 Source Data: Northern California Cancer Center Registry, 1997-2007

Cancer Mortality (All Cancer Sites)

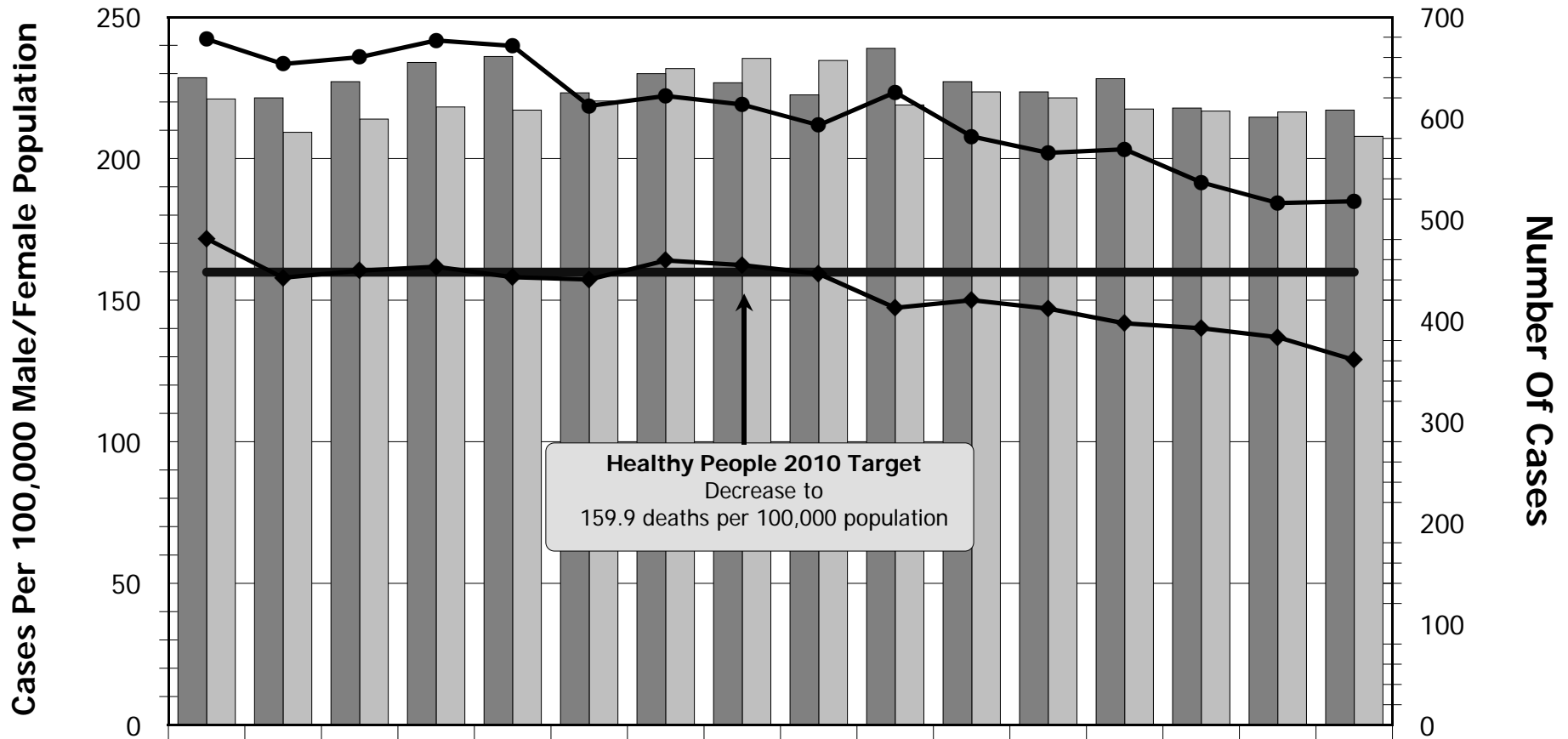
San Mateo County, 1990-2007



Rates are age-adjusted and standardized to Year 2000 population; Source Data: Surveillance, Epidemiology, and End Results (SEER) Program (www.seer.cancer.gov) SEER*Stat Database: Incidence-Based Mortality - SEER 9 Regs Research Data, Nov 2009 Sub (1973-2007)

Cancer Mortality By Sex (All Cancer Sites)

San Mateo County, 1992-2007

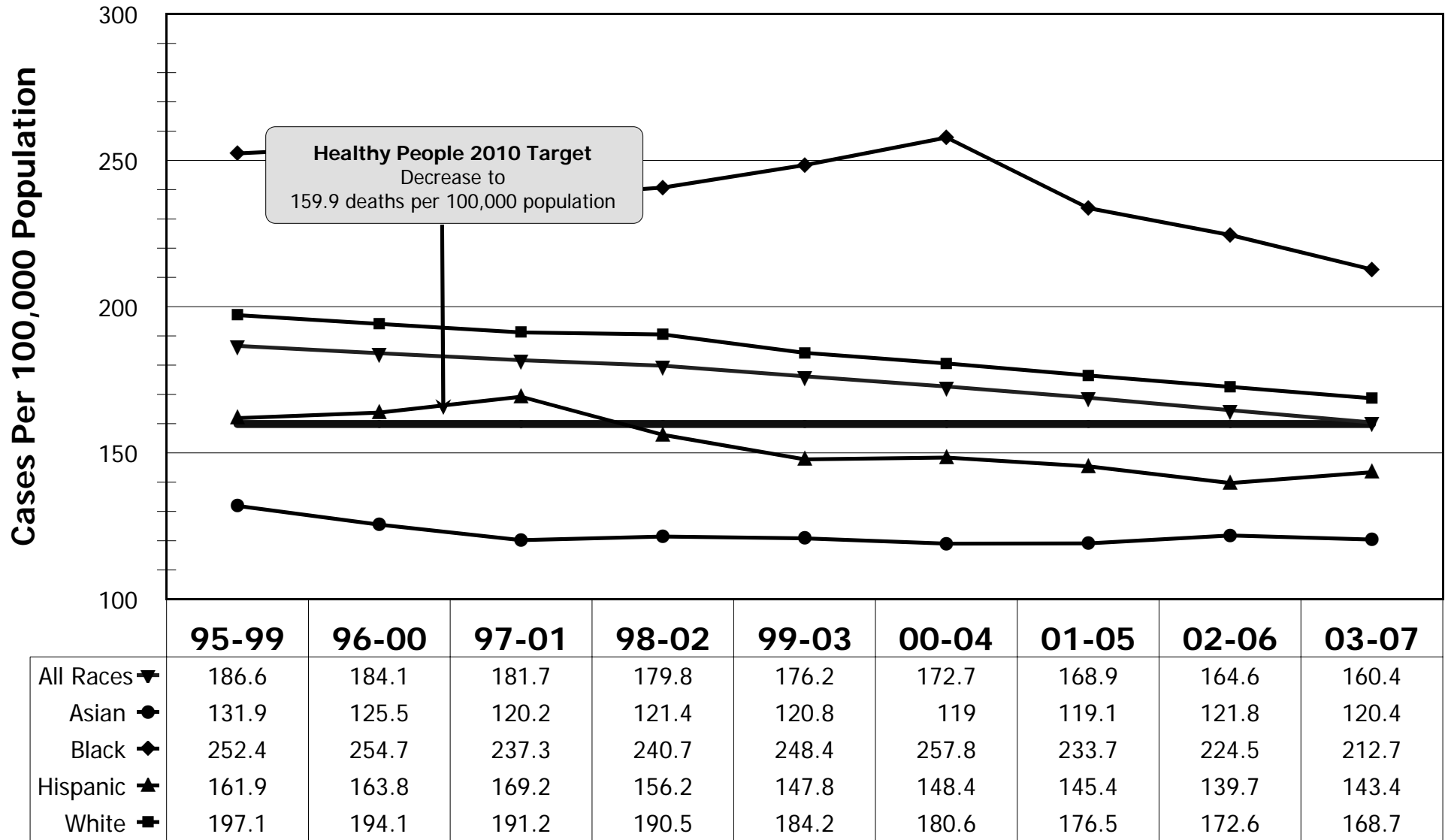


	1992	1993	1994	1995	1996	1997	1998	1999	2000	2001	2002	2003	2004	2005	2006	2007
All Cases	199.7	187.2	189.1	191.7	188.9	182	186.8	183.8	178.9	177	172.5	168.7	166.4	160	155.4	151.6
Number Male	640	620	636	655	661	625	644	635	623	669	636	626	639	610	601	608
Rate Male	242.2	233.4	235.8	241.7	239.8	218.6	222.1	219.1	211.8	223.4	207.8	202	203.3	191.6	184.3	184.9
Number Female	619	586	599	611	608	617	649	659	657	613	626	620	609	607	606	582
Rate Female	171.7	157.9	160.4	161.8	158.1	157.3	164	162.4	159.3	147.3	150	147	141.8	140.1	136.9	128.9

Rates are age-adjusted and standardized to Year 2000 population; Source Data: Surveillance, Epidemiology, and End Results (SEER) Program (www.seer.cancer.gov) SEER*Stat Database: Incidence-Based Mortality - SEER 9 Regs Research Data, Nov 2009 Sub (1973-2007)

Cancer Mortality By Race/Ethnicity (All Cancer Sites)

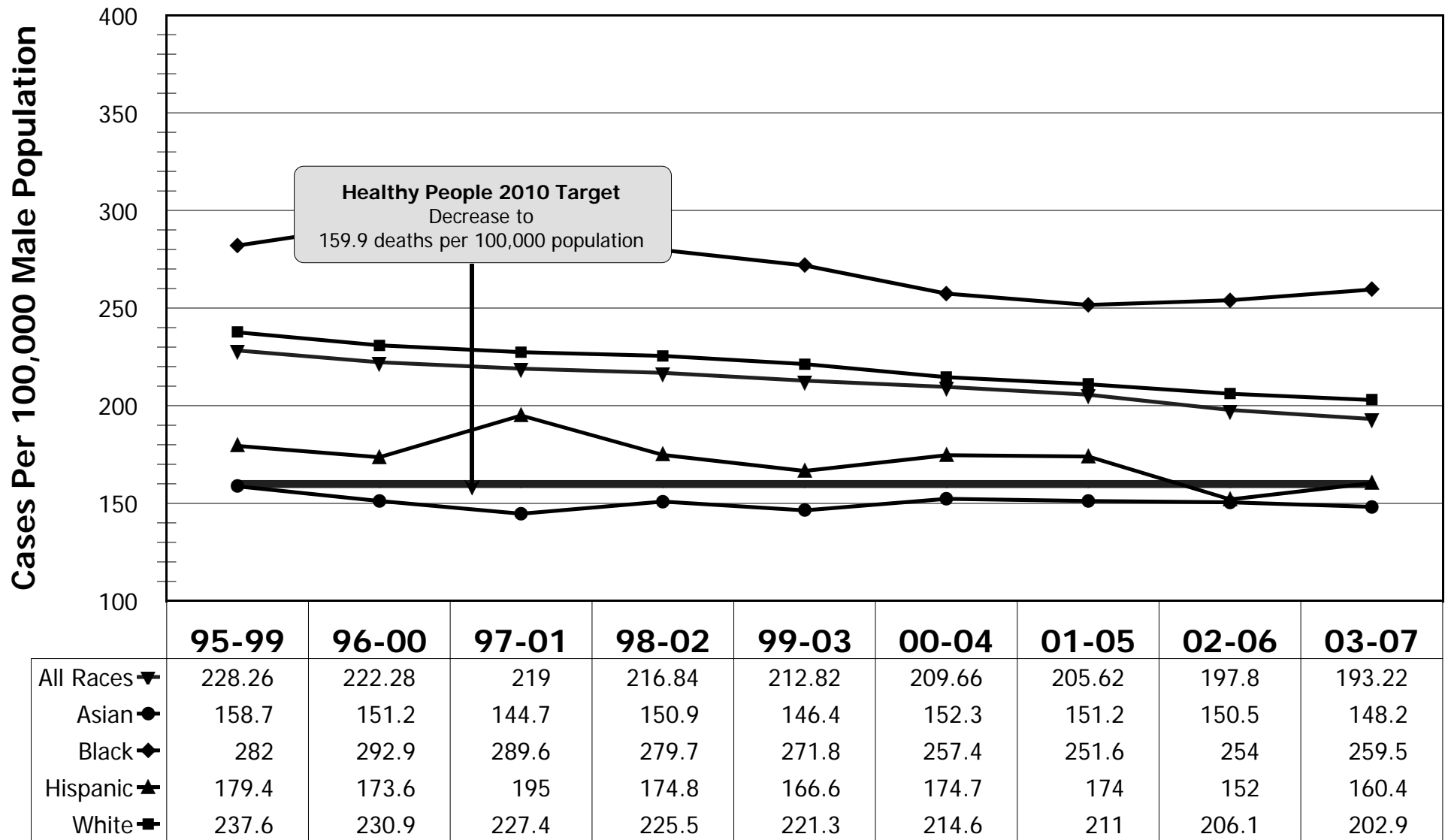
5-Year Moving Averages, San Mateo County, 1995-2007



Rates are age-adjusted and standardized to Year 2000 population; Source Data: Surveillance, Epidemiology, and End Results (SEER) Program (www.seer.cancer.gov) SEER*Stat Database: Incidence-Based Mortality - SEER 9 Regs Research Data, Nov 2009; and California Cancer Registry. (2009). Cancer Incidence/Mortality Rates in California. Retrieved (6/18/10) from <http://www.cancer-rates.info/ca>

Cancer Mortality In Males By Race/Ethnicity (All Cancer Sites)

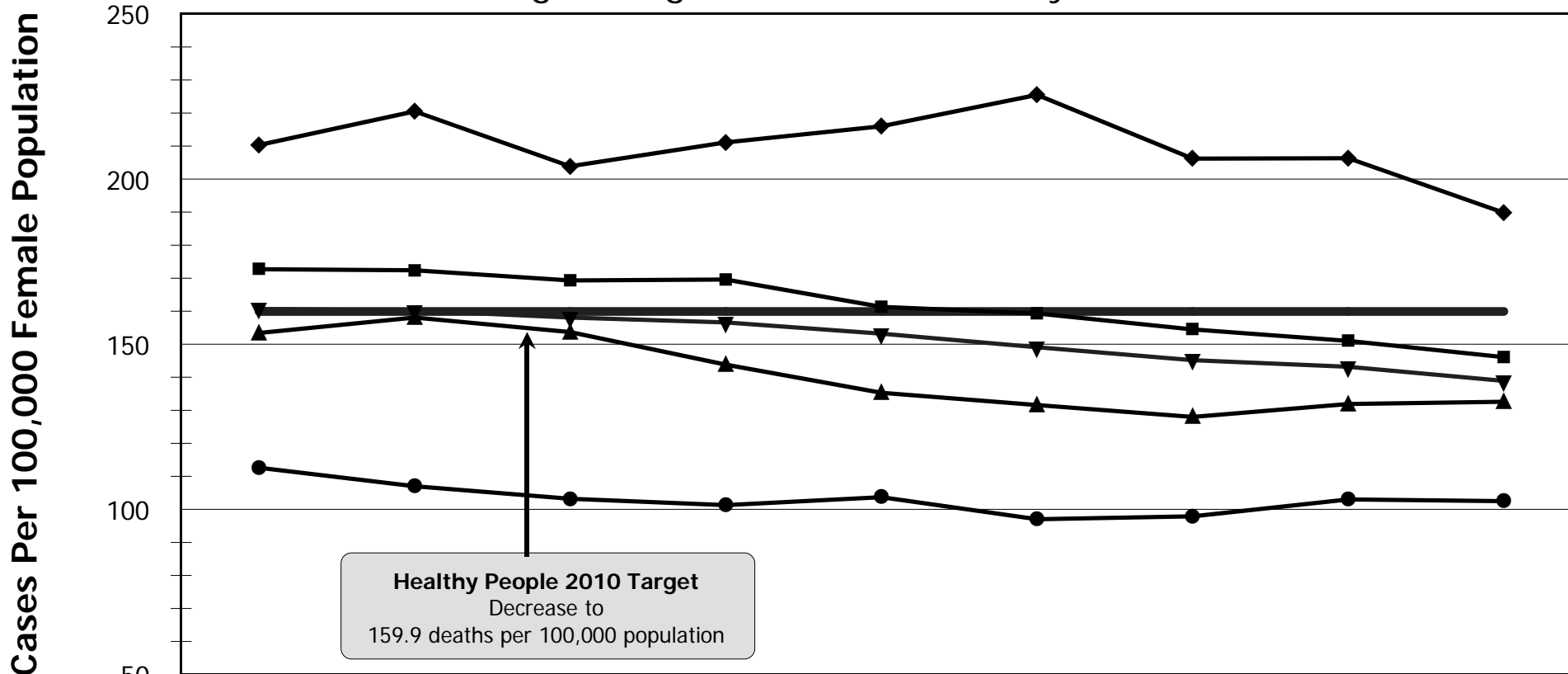
5-Year Moving Averages, San Mateo County, 1995-2007



Rates are age-adjusted and standardized to Year 2000 population; Source Data: Surveillance, Epidemiology, and End Results (SEER) Program (www.seer.cancer.gov) SEER*Stat Database: Incidence-Based Mortality - SEER 9 Regs Research Data, Nov 2009; and California Cancer Registry. (2009). Cancer Incidence/Mortality Rates in California. Retrieved (6/18/10) from <http://www.cancer-rates.info/ca>

Cancer Mortality In Females By Race/Ethnicity (All Cancer Sites)

5-Year Moving Averages, San Mateo County, 1995-2007



Healthy People 2010 Target
Decrease to
159.9 deaths per 100,000 population

	95-99	96-00	97-01	98-02	99-03	00-04	01-05	02-06	03-07
All Races ▼	160.7	160.2	158.1	156.6	153.2	149.1	145.2	143.2	138.9
Asian ●	112.6	107	103.2	101.3	103.7	97	97.9	103	102.5
Black ◆	210.3	220.5	203.9	211.1	216	225.5	206.2	206.3	189.8
Hispanic ▲	153.4	158.1	153.7	143.8	135.3	131.6	128	131.9	132.6
White ■	172.7	172.4	169.3	169.6	161.3	159.3	154.5	151	146.1

Rates are age-adjusted and standardized to Year 2000 population; Source Data: Surveillance, Epidemiology, and End Results (SEER) Program (www.seer.cancer.gov) SEER*Stat Database: Incidence-Based Mortality - SEER 9 Regs Research Data, Nov 2009; and California Cancer Registry. (2009). Cancer Incidence/Mortality Rates in California. Retrieved (6/18/10) from <http://www.cancer-rates.info/ca>

Cancer Mortality By Selected Cancer Type

Cumulative Data, San Mateo County, 1990-2007

Type of Cancer	Total Deaths 1990-2007	Average Annual Number	Age-Adjusted Rate 2003-2007
Lung	5286	311	38.6
Colorectal	2225	131	15.8
Breast	1786; 1774*	104*	13.1; 23.2**
Prostate	1240*	73*	8.5; 22.1**
Pancreatic	1216	72	9.7
Non-Hodgkin's Lymphoma	944	56	7.9
Leukemia	816	48	6.2
Stomach	689	41	4.9
Ovarian	604*	36*	4.7; 8.4**
Brain	551	32	4.2
Liver	463	27	4.2
Esophageal	457	27	3.4
Bladder	472	28	4.1
Oropharyngeal	393	23	2.5
Multiple Myeloma	393	23	3.2
Kidney	378	22	3.2
Skin	401	24	3.5
Uterine	264*	16*	2.5; 4.4**
Thyroid	62	4	0.6
Cervical	114*	7*	0.7; 1.3**
Hodgkin's Disease	56	3	0.3

Rates are age-adjusted, standardized to Year 2000 population, and are cumulative for the five-year period 2003-2007; per 100,000 population

*Sex-specific counts for cancers affecting only males or only females(or female breast cancer)

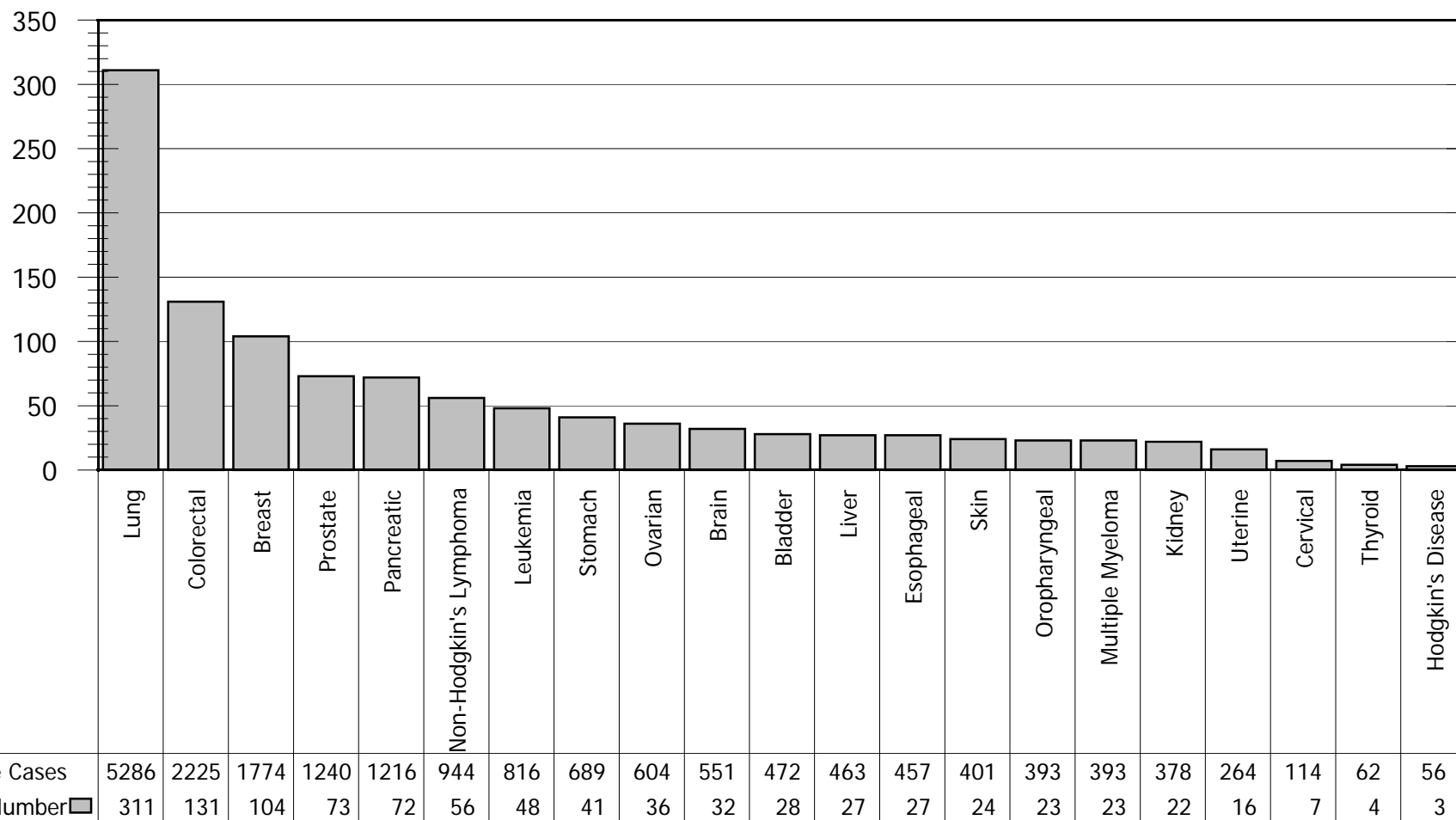
**Sex-specific rates are also shown for cancers affecting only males or only females(or female breast cancer)

Source Data: Surveillance, Epidemiology, and End Results (SEER) Program (www.seer.cancer.gov) SEER*Stat Database: Mortality - All COD, Aggregated With County, Total U.S. (1969-2006)

Cancer Mortality By Selected Cancer Type

Cumulative Data, San Mateo County, 1990-2007

Average Annual Number Of Deaths



Cumulative Cases	5286	2225	1774	1240	1216	944	816	689	604	551	472	463	457	401	393	393	378	264	114	62	56
Average Annual Number	311	131	104	73	72	56	48	41	36	32	28	27	27	24	23	23	22	16	7	4	3

Rates are age-adjusted, standardized to Year 2000 population, and are cumulative for the five-year period 2003-2007 per 100,000 population

*Sex-specific counts and rates are shown for cancers affecting only males or only females(or female breast cancer)

Source Data: Source Data: Surveillance, Epidemiology, and End Results (SEER) Program (www.seer.cancer.gov) SEER*Stat Database: Mortality - All COD, Aggregated With County, Total U.S. (1969-2007)

Five Most Common Causes Of Cancer Death By Sex

Cumulative Data, San Mateo County, 2002-2007

Rank	Both Sexes n (% of all cases) Rate (95% CI)	Males n (% of male cases) Rate (95% CI)	Females n (% of female cases) Rate (95% CI)
1	Lung 1430 (23.5%) 38.6 (36.6, 40.7)	Lung 728 (23.9%) 46.2 (42.9, 49.7)	Lung 702 (23.1%) 33.3 (30.9, 35.9)
2	Colorectal 605 (10.0%) 15.8 (14.6, 17.2)	Prostate 323 (10.6%) 22.1 (19.8, 24.7)	Breast 497 (16.4%) 23.2 (21.2, 25.4)
3	Breast 502 (8.3%) 13.1 (11.9, 14.3)	Colorectal 305 (10.0%) 19.4 (17.3, 21.8)	Colorectal 300 (9.9%) 13.2 (11.7, 14.8)
4	Pancreatic 367 (6.0%) 9.7 (8.7, 10.8)	Pancreatic 182 (6.0%) 11.4 (9.8, 13.2)	Pancreatic 185 (6.1%) 8.4 (7.2, 9.7)
5	Prostate 323 (5.3%) 8.5 (7.6, 9.5)	Non-Hodgkin's Lymphoma 173 (5.7%) 10.8 (9.2, 12.6)	Ovarian 175 (5.8%) 8.4 (7.2, 9.7)
Total (All Deaths)	6080	3041	3039

Rates are age-adjusted, standardized to Year 2000 population, per 100,000 population, and are cumulative for the five-year period 2002-2007.

Source Data: Surveillance, Epidemiology, and End Results (SEER) Program (www.seer.cancer.gov) SEER*Stat Database: Mortality - All COD, Aggregated With County, Total U.S. (1990-2007).

Five Most Common Causes Of Cancer Death By Race/Ethnicity

Cumulative Data, San Mateo County, 2002-2007

Rank	Asian	Black	Hispanic	White
	N (% of cases) Rate	N (% of cases) Rate	N (% of cases) Rate	N (% of cases) Rate
1	Lung 210 (23.4%) 28.7	Lung 80 (27.5%) 59.7	Lung 87 (17.8%) 23.2	Lung 1054 (23.9%) 43
2	Colorectal 95 (10.6%) 13.5	Colorectal 33 (11.3%) 25.5	Colorectal 46 (9.4%) 10	Colorectal 432 (9.8%) 16.6
3	Breast 88 (9.8%) 10.4	Prostate 24 (8.3%) 20.5	Non-Hodgkin's Lymphoma 31 (6.3%) 7.9	Breast 365 (8.3%) 14.6
4	Liver 66 (7.4%) 8.6	Pancreatic 23 (7.9%) 18.2	Pancreatic 30 (6.1%) 7.7	Pancreatic 268 (6.1%) 10.6
5	Pancreatic 48 (5.4%) 6.4	Breast 19 (6.5%) 14.8	Breast 30 (6.1%) 6.5	Prostate 250 (5.7%) 9.2
Total (All Deaths)	896	291	490	4413

Rates are age-adjusted, standardized to Year 2000 population, per 100,000 population, and are cumulative for the five-year period 2002-2007.

Source Data: Surveillance, Epidemiology, and End Results (SEER) Program (www.seer.cancer.gov) SEER*Stat Database: Mortality - All COD, Aggregated With County, Total U.S. (1990-2006).

Five Most Common Causes Of Cancer Death In Males By Race/Ethnicity

Cumulative Data, San Mateo County, 2002-2007

Rank	Asian	Black	Hispanic	White
	N (% of cases) Rate	N (% of cases) Rate	N (% of cases) Rate	N (% of cases) Rate
1	Lung 126 (27.8%) 40.9	Lung 45 (31.7%) 76.2	Lung 29 (12.3%) 41	Lung 517 (23.4%) 48.7
2	Colorectal 52 (11.5%) 16.9	Prostate 24 (16.9%) 51.6	Colorectal 23 (9.8%) 11.5	Prostate 250 (11.3%) 23.7
3	Liver 43 (9.5%) 12	Colorectal 15 (10.6%) 26.5	Prostate 19 (8.1%) 14.2	Colorectal 215 (9.7%) 20.4
4	Stomach 30 (6.6%) 10.8	Stomach 9 (6.3%) 15.7	Non-Hodgkin's Lymphoma 17 (7.2%) 9.6	Pancreatic 140 (6.3%) 13.1
5	Prostate 29 (6.4%) 12.1	Pancreatic 9 (6.3%) 15.4	Liver 16 (6.8%) 7.6	Non-Hodgkin's Lymphoma 131 (5.9%) 12.3
Total (All Deaths)	454	142	235	2214

Rates are age-adjusted, standardized to Year 2000 population, per 100,000 population, and are cumulative for the five-year period 2002-2007.

Source Data: Surveillance, Epidemiology, and End Results (SEER) Program (www.seer.cancer.gov) SEER*Stat Database: Mortality - All COD, Aggregated With County, Total U.S. (1990-2006).

Five Most Common Causes Of Cancer Death In Females By Race/Ethnicity

Cumulative Data, San Mateo County, 2002-2007

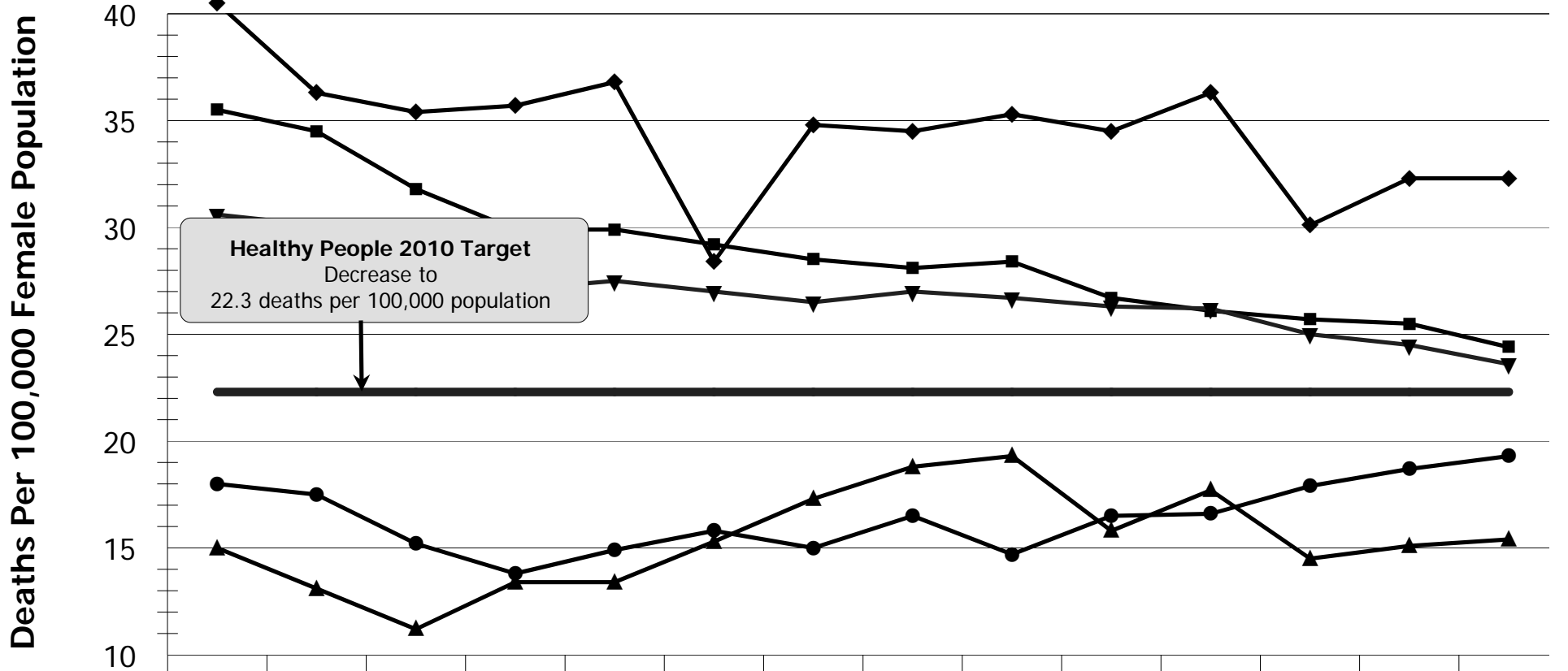
Rank	Asian	Black	Hispanic	White
	N (% of cases) Rate	N (% of cases) Rate	N (% of cases) Rate	N (% of cases) Rate (95% CI)
1	Breast 72 (19.1%) 16.6	Lung 45 (28.0%) 64.8	Lung 39 (17.8%) 18.8	Lung 599 (25.6%) 42.4
2	Lung 65 (17.3%) 17.7	Breast 19 (11.8%) 28.6	Breast 35 (16.0%) 14.7	Breast 366 (15.6%) 26.4
3	Colorectal 38 (10.1%) 11.1	Colorectal 14 (8.7%) 19.8	Colorectal 21 (9.6%) 9.7	Colorectal 238 (10.2%) 15.2
4	Ovarian 25 (6.6%) 6.6	Pancreatic 13 (8.1%) 20.3	Pancreatic 18 (8.2%) 7.5	Ovarian 149 (6.4%) 11
5	Pancreatic 20 (5.3%) 5.9	*	Stomach 14 (6.4%) 8.1	Pancreatic 138 (5.9%) 9.4
Total (All Deaths)	376	161	219	2342

Rates are age-adjusted, standardized to Year 2000 population, per 100,000 population, and are cumulative for the five-year period 2002-2007.

Source Data: Surveillance, Epidemiology, and End Results (SEER) Program (www.seer.cancer.gov) SEER*Stat Database: Mortality - All COD, Aggregated With County, Total U.S. (1990-2006).

Female Breast Cancer Mortality By Race/Ethnicity

5-Year Moving Averages, San Mateo County, 1990-2007

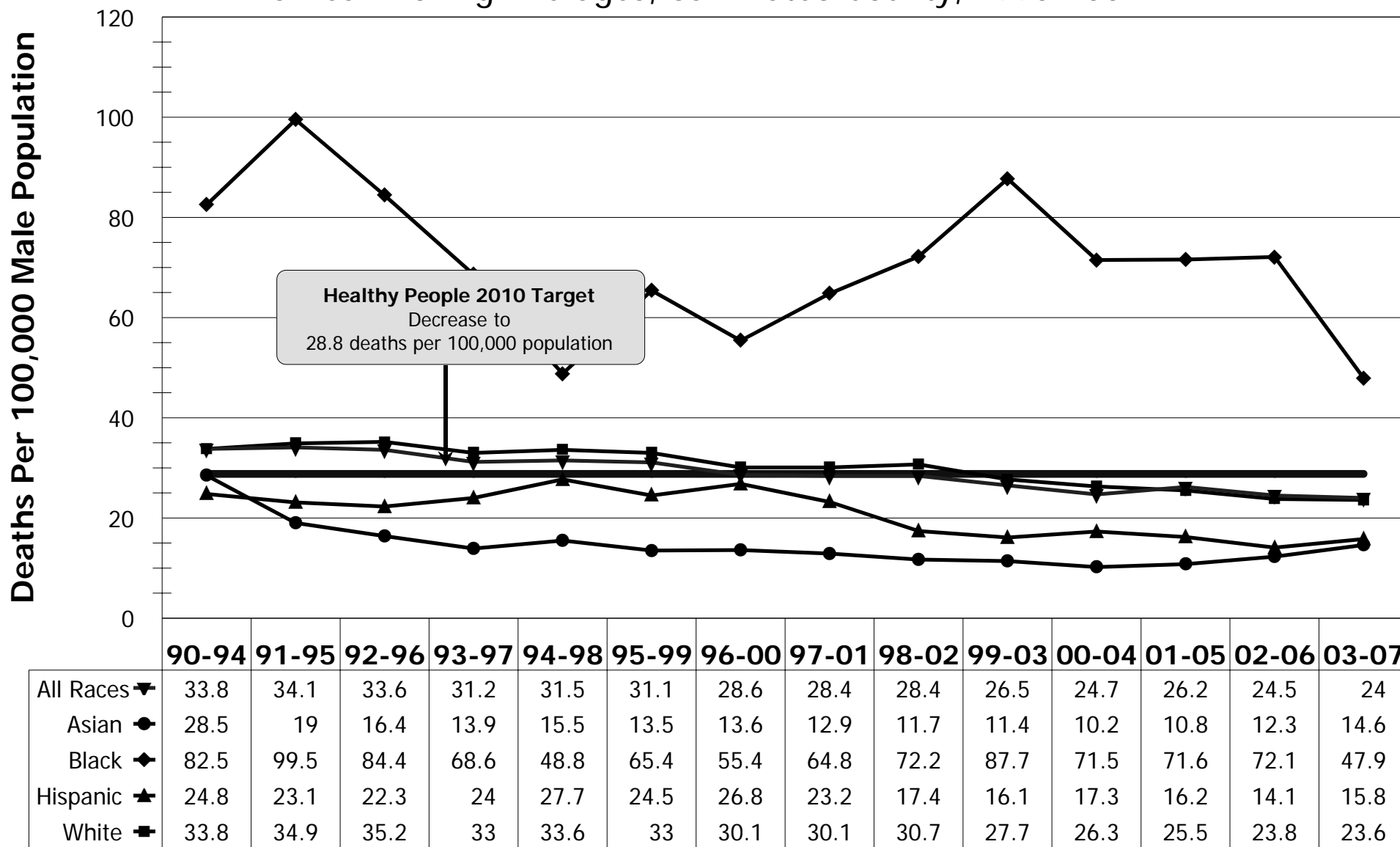


	90-94	91-95	92-96	93-97	94-98	95-99	96-00	97-01	98-02	99-03	00-04	01-05	02-06	03-07
All Races ▼	30.6	30.1	28.3	27.1	27.5	27	26.5	27	26.7	26.3	26.2	25	24.5	23.6
Asian ●	18	17.5	15.2	13.8	14.9	15.8	15	16.5	14.7	16.5	16.6	17.9	18.7	19.3
Black ◆	40.5	36.3	35.4	35.7	36.8	28.4	34.8	34.5	35.3	34.5	36.3	30.1	32.3	32.3
Hispanic ★	15	13.1	11.2	13.4	13.4	15.3	17.3	18.8	19.3	15.8	17.7	14.5	15.1	15.4
White ■	35.5	34.5	31.8	29.9	29.9	29.2	28.5	28.1	28.4	26.7	26.1	25.7	25.5	24.4

Rates are age-adjusted and standardized to Year 2000 population; Source Data: California Cancer Registry. (2009). Cancer Mortality/Mortality Rates in California. Retrieved (8/19/10) from <http://www.cancer-rates.info/ca>

Male Prostate Cancer Mortality By Race/Ethnicity

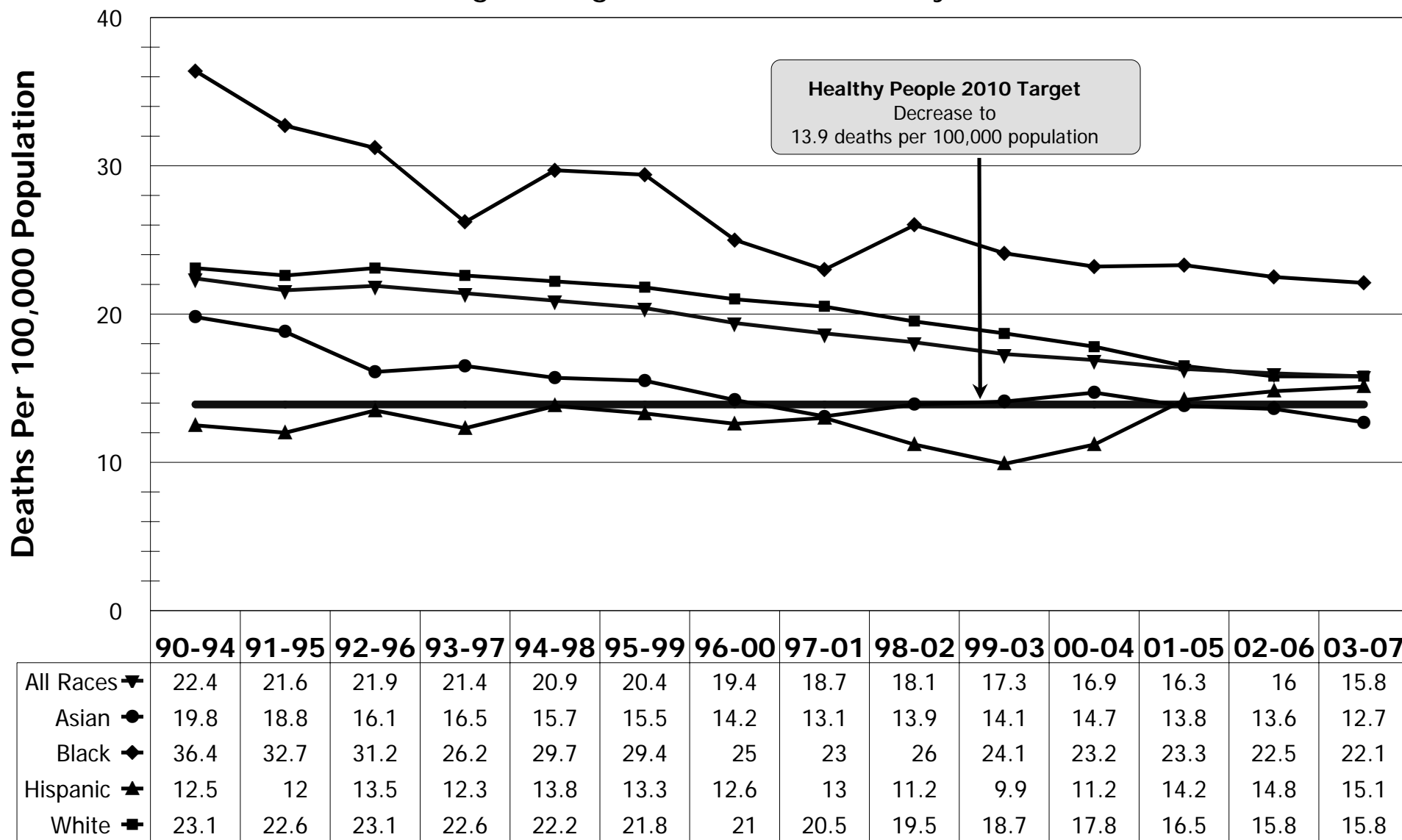
5-Year Moving Averages, San Mateo County, 1990-2007



Rates are age-adjusted and standardized to Year 2000 population; Source Data: California Cancer Registry. (2009). Cancer Mortality/Mortality Rates in California. Retrieved (8/19/10) from <http://www.cancer-rates.info/ca>

Colorectal Cancer Mortality By Race/Ethnicity

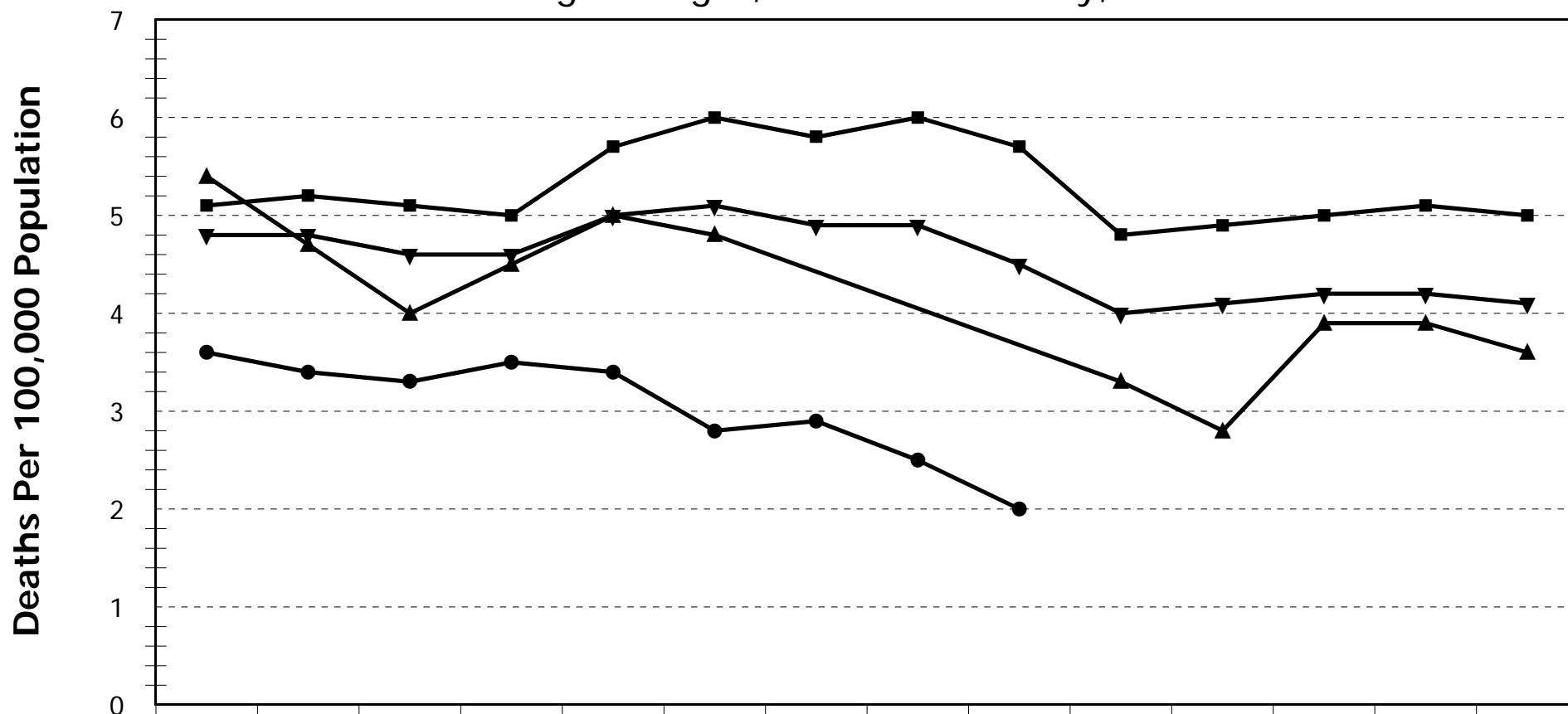
5-Year Moving Averages, San Mateo County, 1990-2007



Rates are age-adjusted and standardized to Year 2000 population; Source Data: California Cancer Registry. (2009). Cancer Mortality/Mortality Rates in California. Retrieved (8/19/10) from <http://www.cancer-rates.info/ca>

Brain and Other Nervous System Cancer Mortality By Race/Ethnicity

5-Year Moving Averages, San Mateo County, 1990-2007



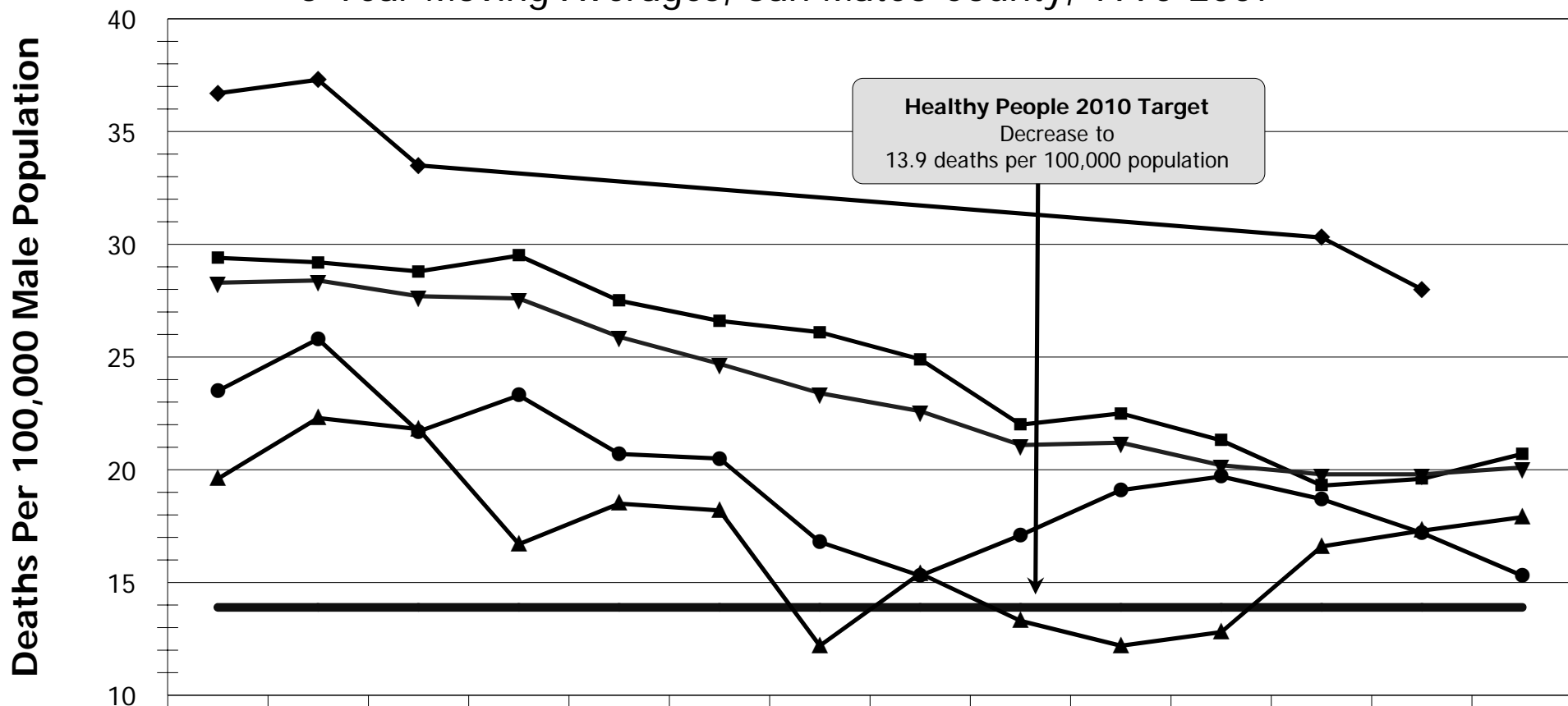
	90-94	91-95	92-96	93-97	94-98	95-99	96-00	97-01	98-02	99-03	00-04	01-05	02-06	03-07
All Races ▼	4.8	4.8	4.6	4.6	5	5.1	4.9	4.9	4.5	4	4.1	4.2	4.2	4.1
Asian ●	3.6	3.4	3.3	3.5	3.4	2.8	2.9	2.5	2	*	*	*	*	*
Hispanic ▲	5.4	4.7	4	4.5	5	4.8	*	*	*	3.3	2.8	3.9	3.9	3.6
White ■	5.1	5.2	5.1	5	5.7	6	5.8	6	5.7	4.8	4.9	5	5.1	5

Rates are age-adjusted and standardized to Year 2000 population; Source Data: California Cancer Registry. (2009). Cancer Mortality/Mortality Rates in California. Retrieved (11/1/10) from <http://www.cancer-rates.info/ca>

* Counts <15 are too few to calculate a stable age-adjusted rate. Due to counts <15, the mortality rates for Blacks not shown.

Male Colorectal Cancer Mortality By Race/Ethnicity

5-Year Moving Averages, San Mateo County, 1990-2007



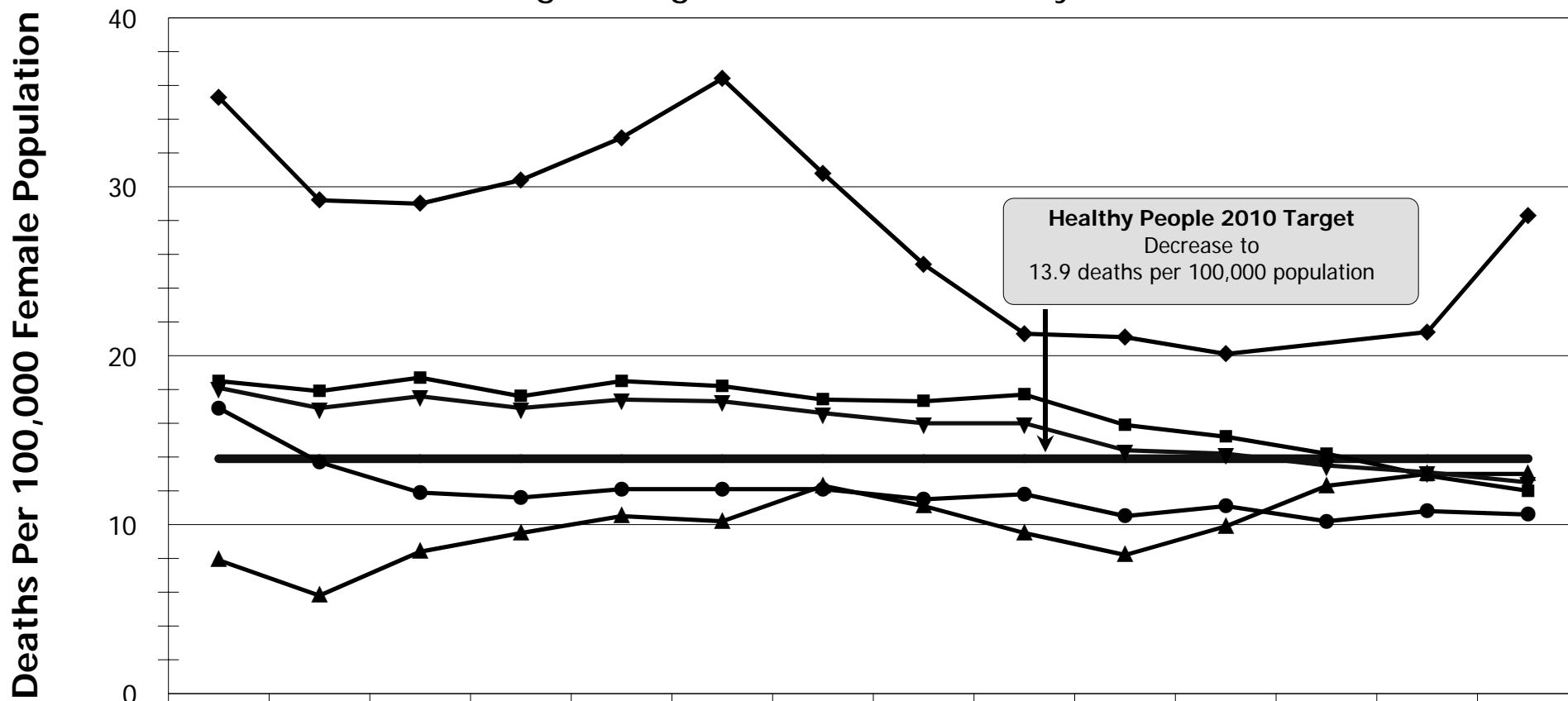
Healthy People 2010 Target
Decrease to
13.9 deaths per 100,000 population

	90-94	91-95	92-96	93-97	94-98	95-99	96-00	97-01	98-02	99-03	00-04	01-05	02-06	03-07
All Races ▼	28.3	28.4	27.7	27.6	25.9	24.7	23.4	22.6	21.1	21.2	20.2	19.8	19.8	20.1
Asian ●	23.5	25.8	21.7	23.3	20.7	20.5	16.8	15.3	17.1	19.1	19.7	18.7	17.2	15.3
Black ◆	36.7	37.3	33.5	^	^	^	^	^	^	^	^	30.3	28	^
Hispanic ▲	19.6	22.3	21.8	16.7	18.5	18.2	12.2	15.4	13.3	12.2	12.8	16.6	17.3	17.9
White ■	29.4	29.2	28.8	29.5	27.5	26.6	26.1	24.9	22	22.5	21.3	19.3	19.6	20.7

Rates are age-adjusted and standardized to Year 2000 population; Source Data: California Cancer Registry. (2009). Cancer Mortality/Mortality Rates in California. Retrieved (8/19/10) from <http://www.cancer-rates.info/ca>

Female Colorectal Cancer Mortality By Race/Ethnicity

5-Year Moving Averages, San Mateo County, 1990-2007

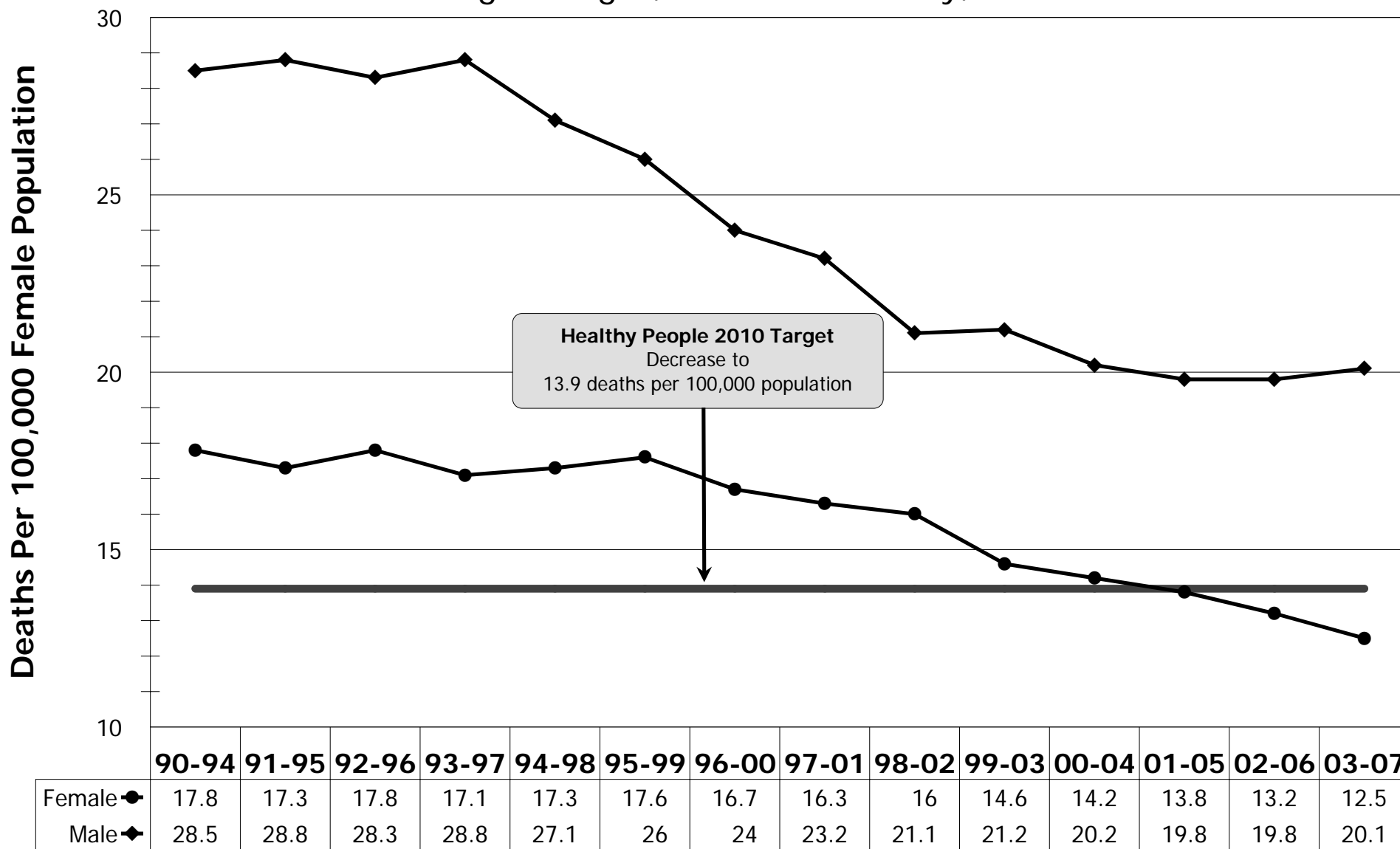


	90-94	91-95	92-96	93-97	94-98	95-99	96-00	97-01	98-02	99-03	00-04	01-05	02-06	03-07
All Races ▼	18.1	16.9	17.6	16.9	17.4	17.3	16.6	16	16	14.4	14.2	13.5	13.1	12.5
Asian ●	16.9	13.7	11.9	11.6	12.1	12.1	12.1	11.5	11.8	10.5	11.1	10.2	10.8	10.6
Black ◆	35.3	29.2	29	30.4	32.9	36.4	30.8	25.4	21.3	21.1	20.1	^	21.4	28.3
Hispanic ▲	7.9	5.8	8.4	9.5	10.5	10.2	12.3	11.1	9.5	8.2	9.9	12.3	13	13
White ■	18.5	17.9	18.7	17.6	18.5	18.2	17.4	17.3	17.7	15.9	15.2	14.2	12.9	12

Rates are age-adjusted and standardized to Year 2000 population; Source Data: California Cancer Registry. (2009). Cancer Mortality/Mortality Rates in California. Retrieved (8/19/10) from <http://www.cancer-rates.info/ca>

Colorectal Cancer Mortality By Sex

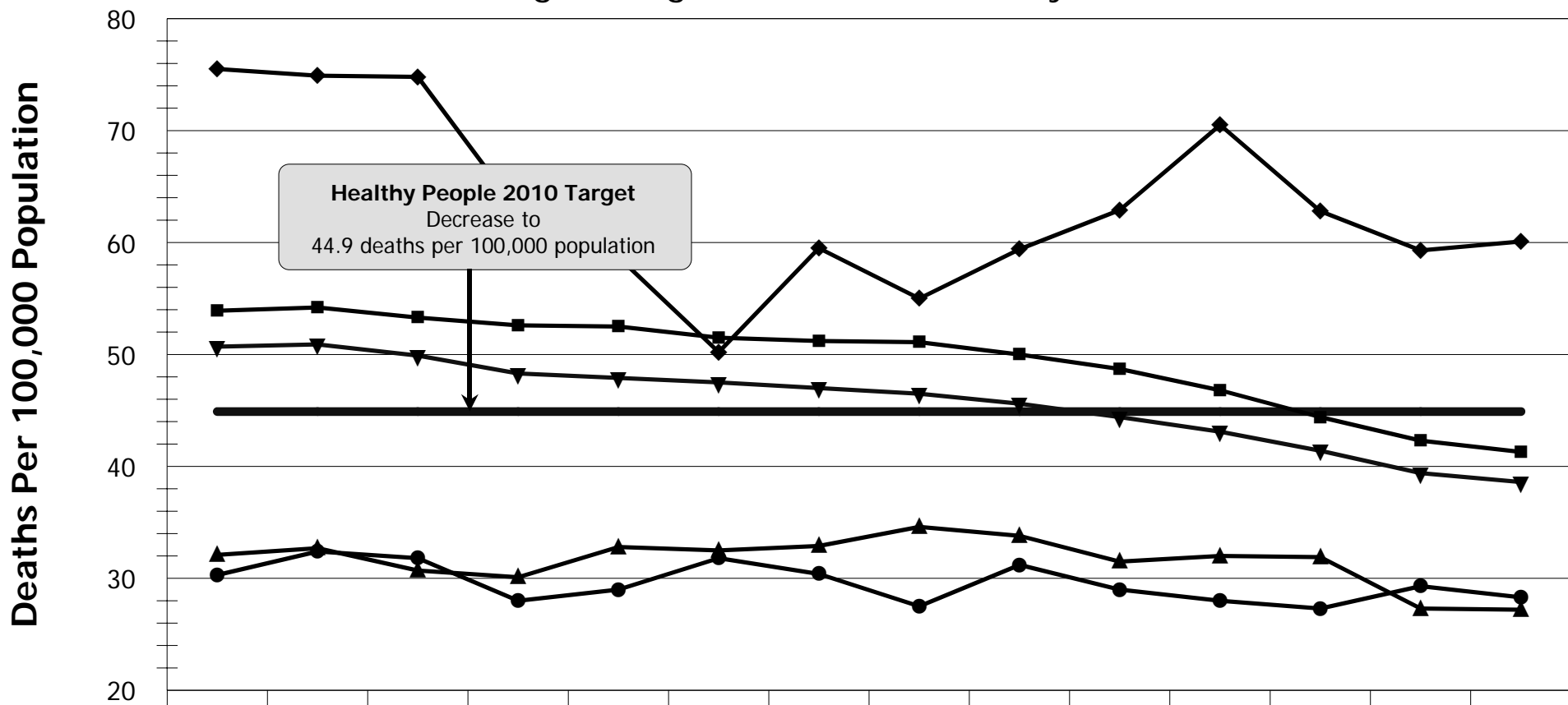
5-Year Moving Averages, San Mateo County, 1990-2007



Rates are age-adjusted and standardized to Year 2000 population; Source Data: Surveillance, Epidemiology, and End Results (SEER) Program (www.seer.cancer.gov) SEER*Stat Database: Incidence-Based Mortality - SEER 9 Regs Research Data, Nov 2009.

Lung Cancer Mortality By Race/Ethnicity

5-Year Moving Averages, San Mateo County, 1990-2007

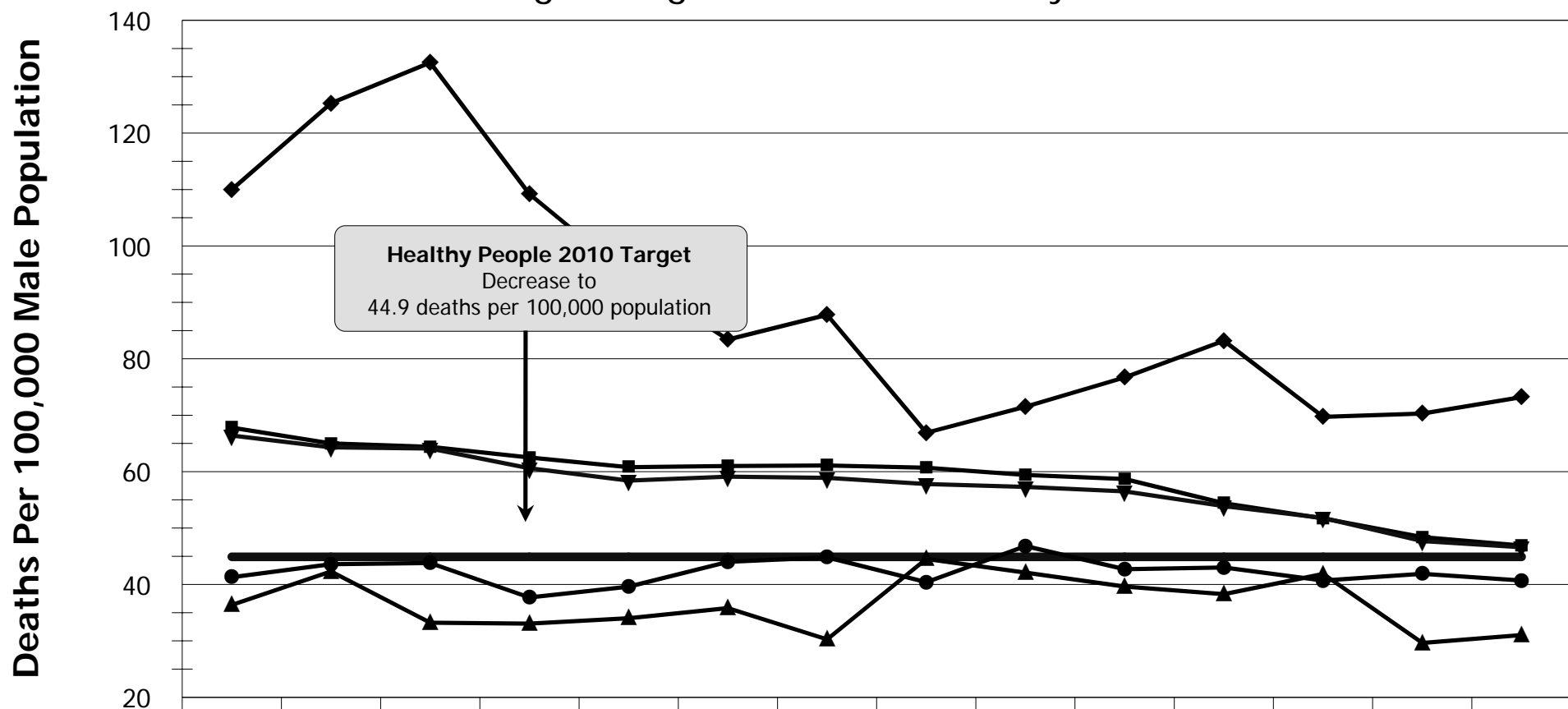


	90-94	91-95	92-96	93-97	94-98	95-99	96-00	97-01	98-02	99-03	00-04	01-05	02-06	03-07
All Races ▼	50.7	50.9	49.9	48.3	47.9	47.5	47	46.5	45.6	44.4	43.1	41.4	39.4	38.6
Asian ●	30.3	32.4	31.8	28	29	31.8	30.4	27.5	31.2	29	28	27.3	29.3	28.3
Black ◆	75.5	74.9	74.8	62.8	58.7	50.2	59.5	55	59.4	62.9	70.5	62.8	59.3	60.1
Hispanic ▲	32.1	32.7	30.7	30.1	32.8	32.5	32.9	34.6	33.8	31.5	32	31.9	27.3	27.2
White ■	53.9	54.2	53.3	52.6	52.5	51.5	51.2	51.1	50	48.7	46.8	44.4	42.3	41.3

Rates are age-adjusted and standardized to Year 2000 population; Source Data: California Cancer Registry. (2009). Cancer Mortality/Mortality Rates in California. Retrieved (6/18/10) from <http://www.cancer-rates.info/ca>

Male Lung Cancer Mortality By Race/Ethnicity

5-Year Moving Averages, San Mateo County, 1990-2007

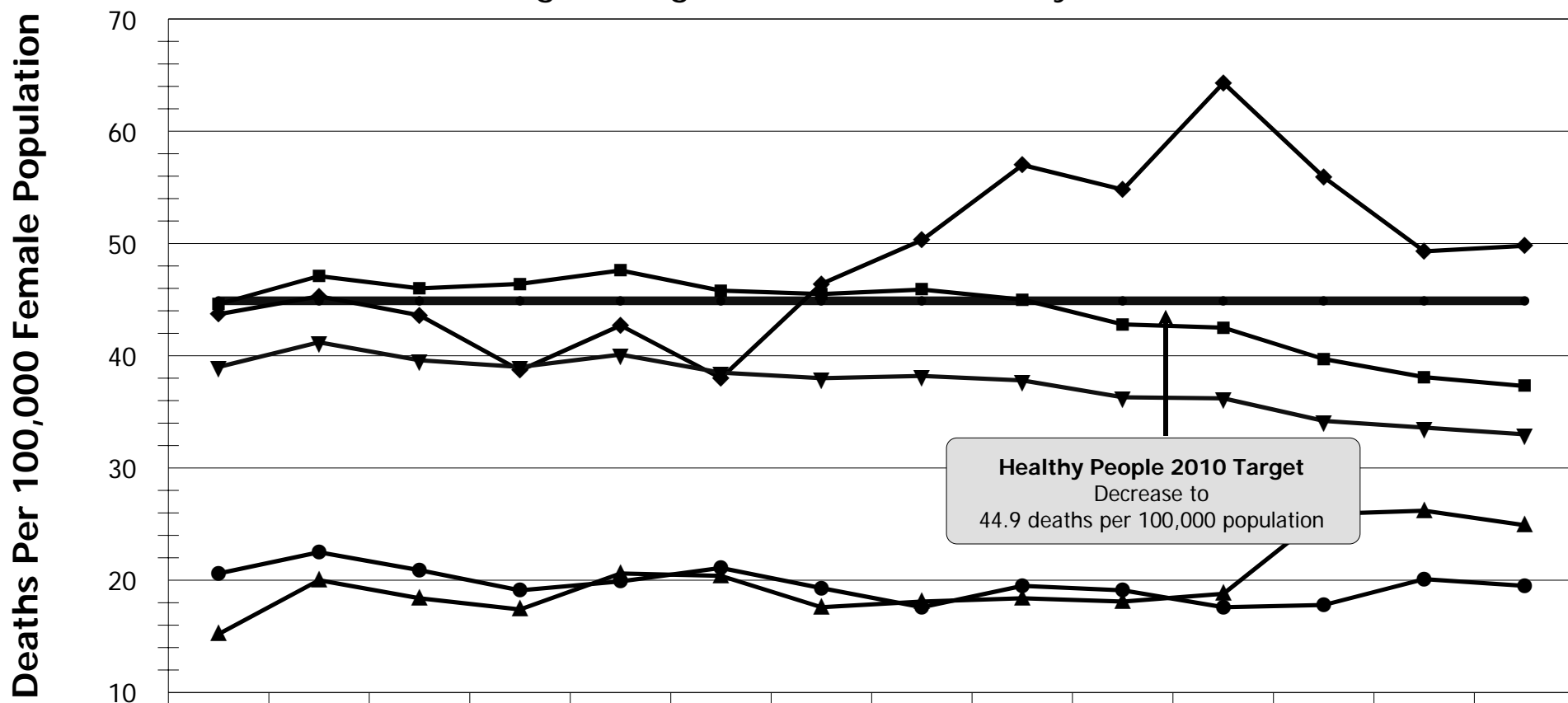


	90-94	91-95	92-96	93-97	94-98	95-99	96-00	97-01	98-02	99-03	00-04	01-05	02-06	03-07
All Races ▼	66.4	64.3	64.1	60.6	58.4	59.1	58.9	57.8	57.3	56.5	53.9	51.8	47.7	46.6
Asian ●	41.3	43.6	43.8	37.7	39.6	44	44.8	40.4	46.8	42.7	43	40.7	41.9	40.7
Black ◆	110	125.3	132.5	109.2	94.7	83.4	87.8	66.9	71.5	76.7	83.2	69.7	70.3	73.2
Hispanic ▲	36.36	42.31	33.22	33.06	34.02	35.82	30.26	44.53	42.1	39.63	38.29	41.86	29.63	31.04
White ■	67.8	65	64.4	62.5	60.8	61	61.1	60.7	59.4	58.7	54.4	51.7	48.4	46.9

Rates are age-adjusted and standardized to Year 2000 population; Source Data: California Cancer Registry. (2009). Cancer Mortality/Mortality Rates in California. Retrieved (6/18/10) from <http://www.cancer-rates.info/ca>

Female Lung Cancer Mortality By Race/Ethnicity

5-Year Moving Averages, San Mateo County, 1990-2007

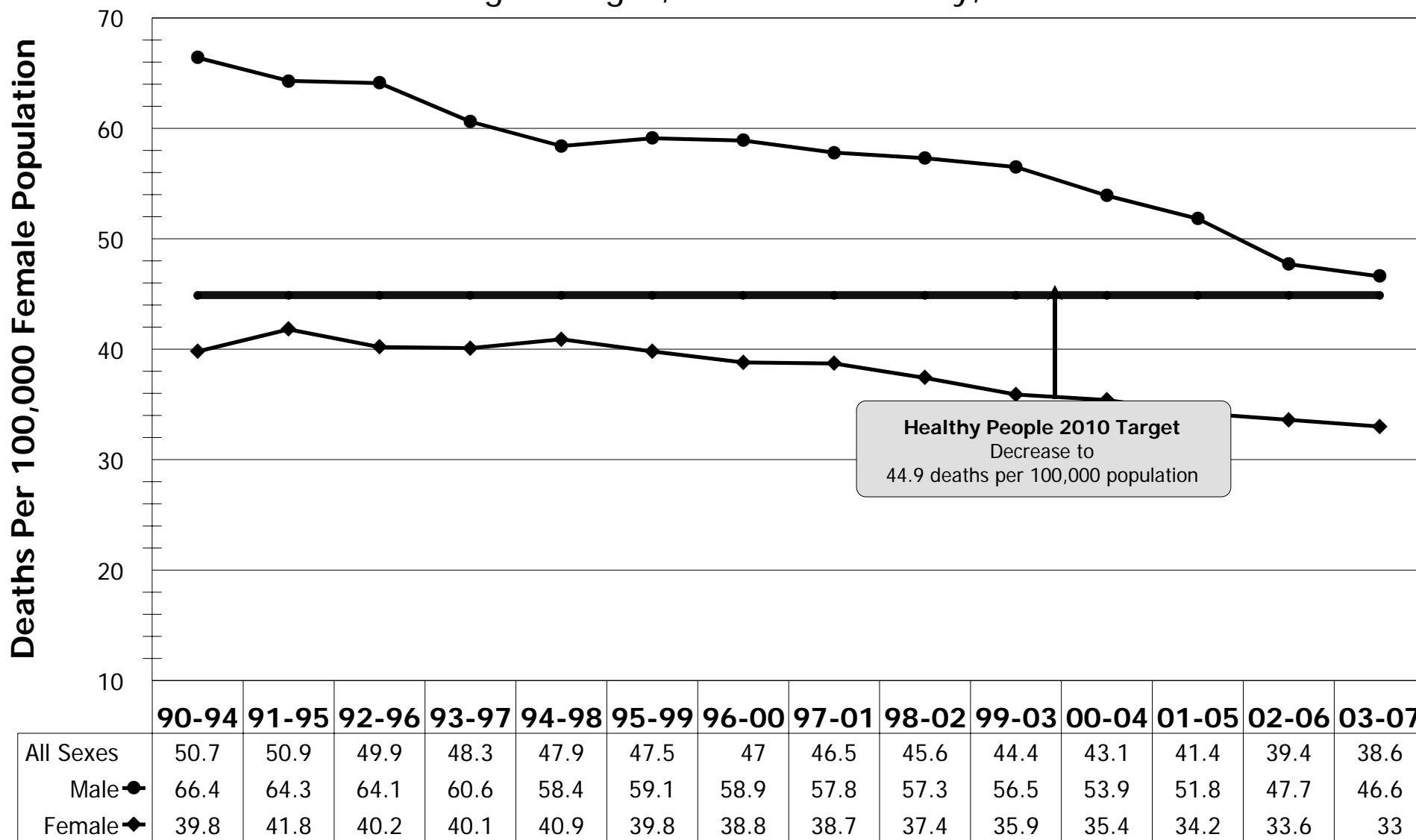


	90-94	91-95	92-96	93-97	94-98	95-99	96-00	97-01	98-02	99-03	00-04	01-05	02-06	03-07
All Races ▼	39	41.2	39.6	39	40.1	38.5	38	38.2	37.8	36.3	36.2	34.2	33.6	33
Asian ●	20.6	22.5	20.9	19.1	19.9	21.1	19.3	17.6	19.5	19.1	17.6	17.8	20.1	19.5
Black ◆	43.7	45.3	43.6	38.7	42.7	38	46.4	50.3	57	54.8	64.3	55.9	49.3	49.8
Hispanic ▲	15.2	20	18.4	17.4	20.6	20.4	17.6	18.1	18.4	18.1	18.8	25.9	26.2	24.9
White ■	44.6	47.1	46	46.4	47.6	45.8	45.5	45.9	45	42.8	42.5	39.7	38.1	37.3

Rates are age-adjusted and standardized to Year 2000 population; Source Data: California Cancer Registry. (2009). Cancer Mortality/Mortality Rates in California. Retrieved (8/19/10) from <http://www.cancer-rates.info/ca>

Lung Cancer Mortality By Sex

5-Year Moving Averages, San Mateo County, 1990-2007



Rates are age-adjusted and standardized to Year 2000 population; 1990-1998 rates have been adjusted to comparability ratio 0.9837

Source Data: Surveillance, Epidemiology, and End Results (SEER) Program (www.seer.cancer.gov) SEER*Stat Database: Mortality - All COD, Aggregated With County, Total U.S. (1990-2006)