

# 2000 S. Delaware St. San Mateo

MidPen Housing Corp.  
Presentation to the  
Mental Health Services Board  
March 23, 2011

# MidPen Housing Corp.

- Founded in 1970
- Employ 300 people
- Work in 10 Northern California counties



# 2000 S. Delaware St.



# 2000 S. Delaware St. – Local Collaboration

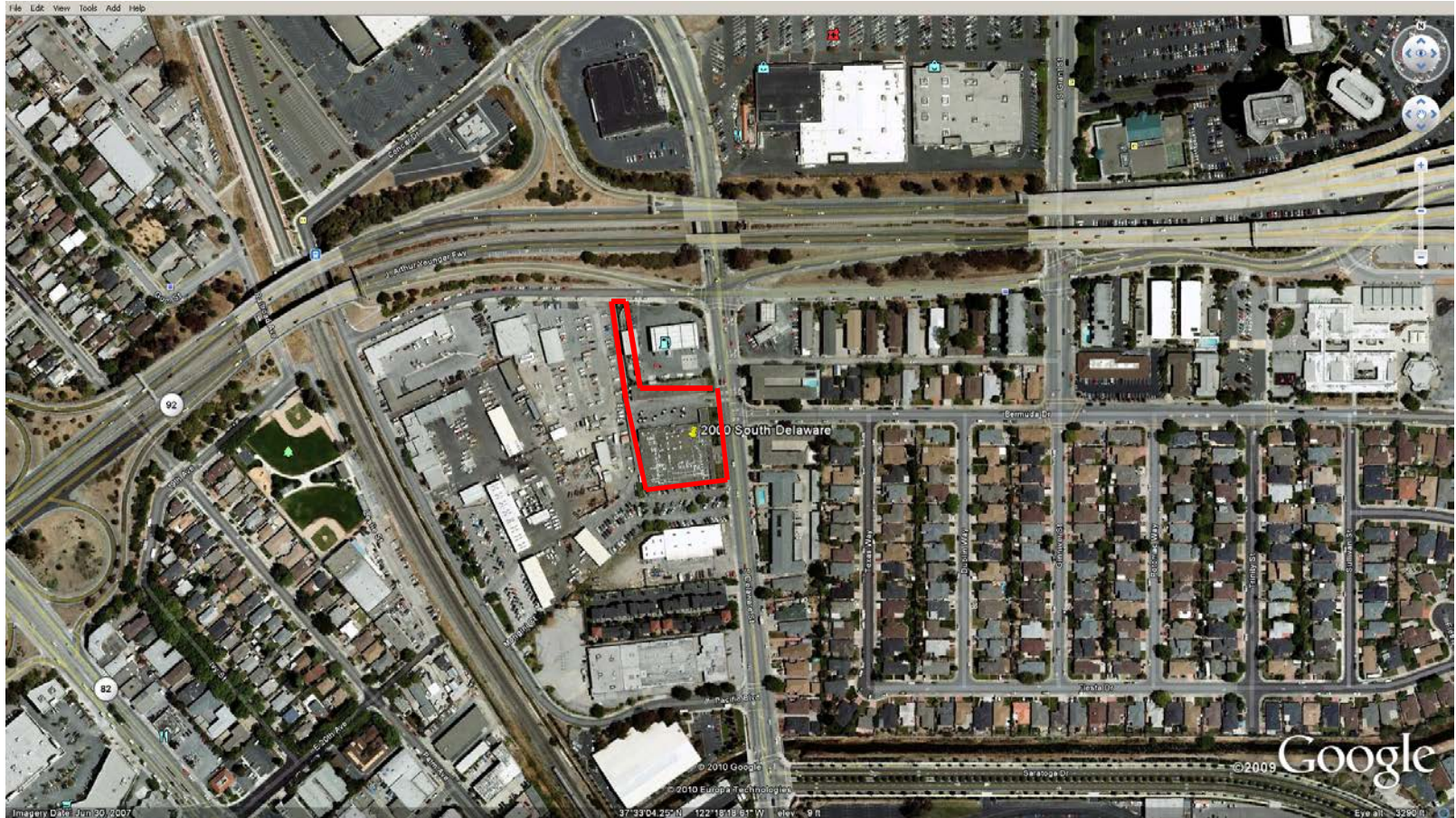


City of San Mateo – land donation & \$1.2M loan

County of San Mateo - \$1.9M loan

Housing Authority of San Mateo – 30 Section 8 Project-based Vouchers

# Project Site



## 2000 S. Delaware St.



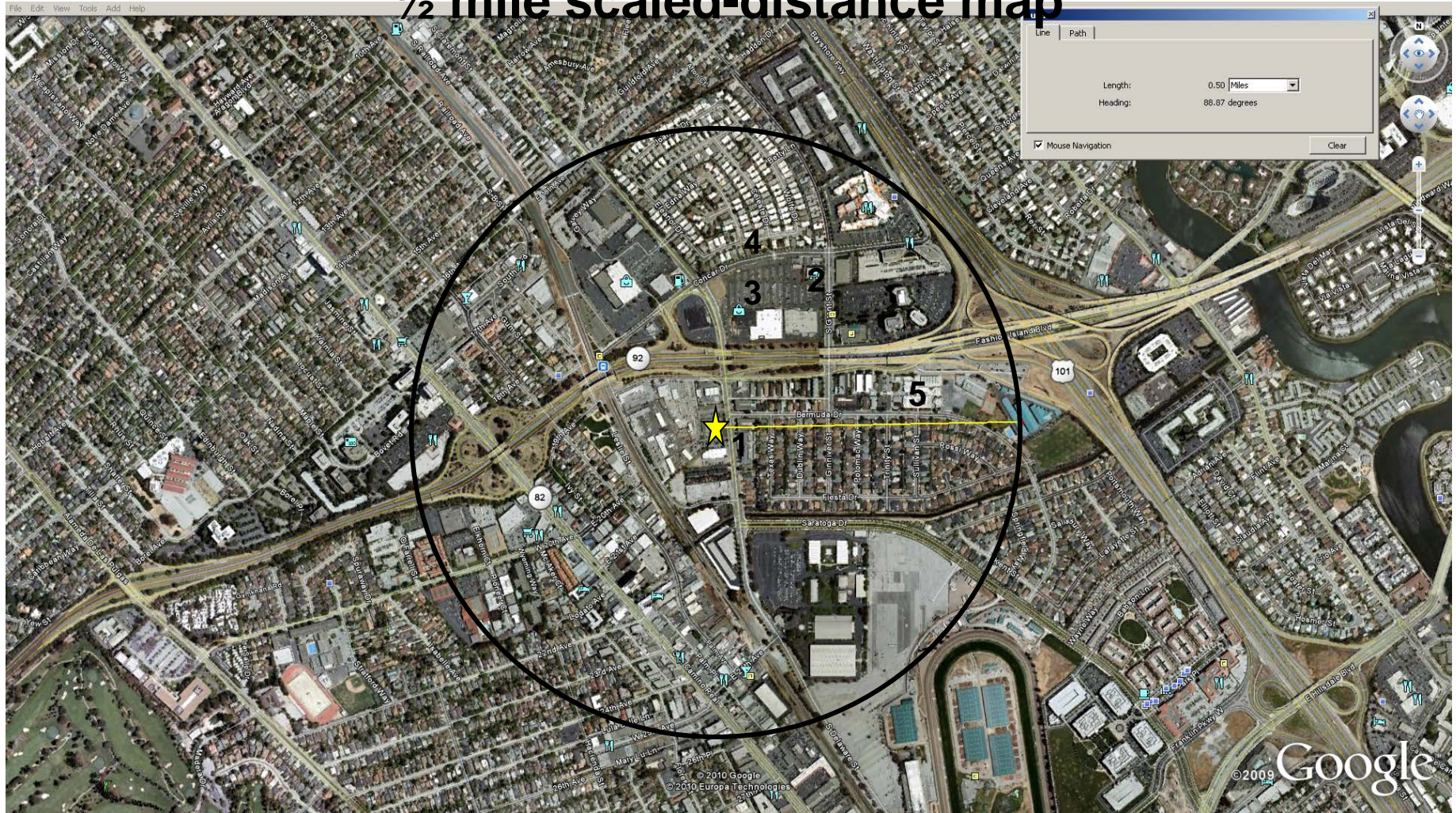
Palo Alto Partners  
Workforce Housing  
60 2-bedroom  
Apartments



MidPen Housing Corp.  
Affordable Housing  
60 1-, 2- and 3-bedroom  
Apartments

# San Mateo Police Station Family Housing

## 1/2 mile scaled-distance map



1. SamTrans Bus Line 295  
South Delaware Street

2. Trader Joes Grocery Store  
1820 South Grant Street  
San Mateo, CA

3. Rite Aid  
666 Concar Drive  
San Mateo, CA

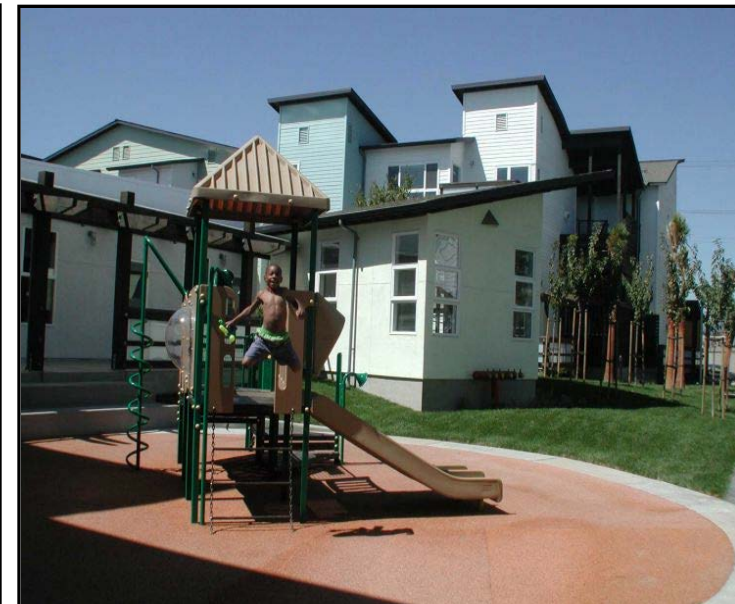
4. Concar Public Park  
Concar Drive  
San Mateo, CA

5. Fiesta Gardens International School  
1001 Bermuda Drive  
San Mateo, CA

# Amenities



- Community Room
- Common Laundry Room
- Fitness Center
- Computer Lab
- Kid's Play Area
- Landscaped Courtyard

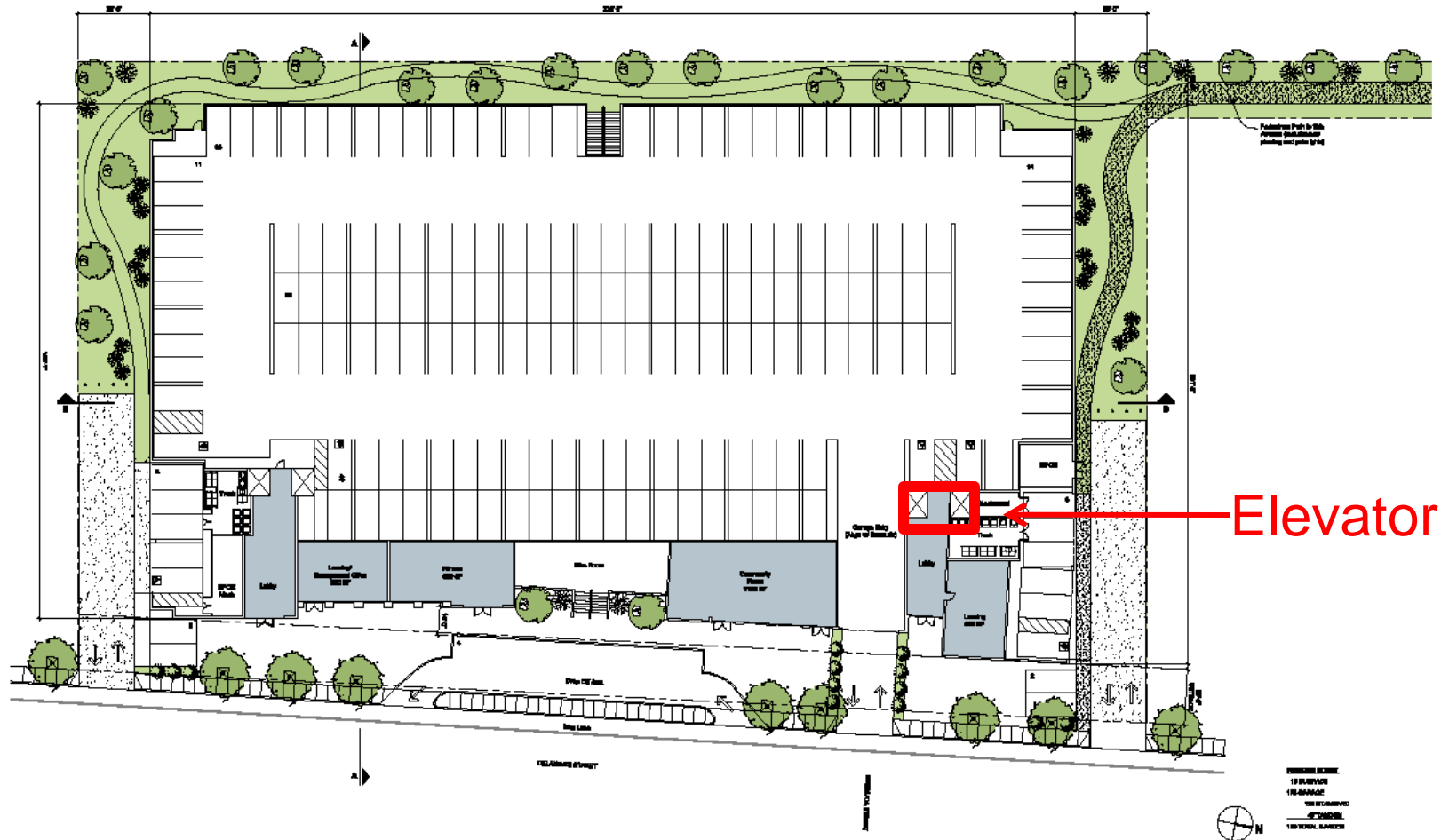




# 2000 S. Delaware St.

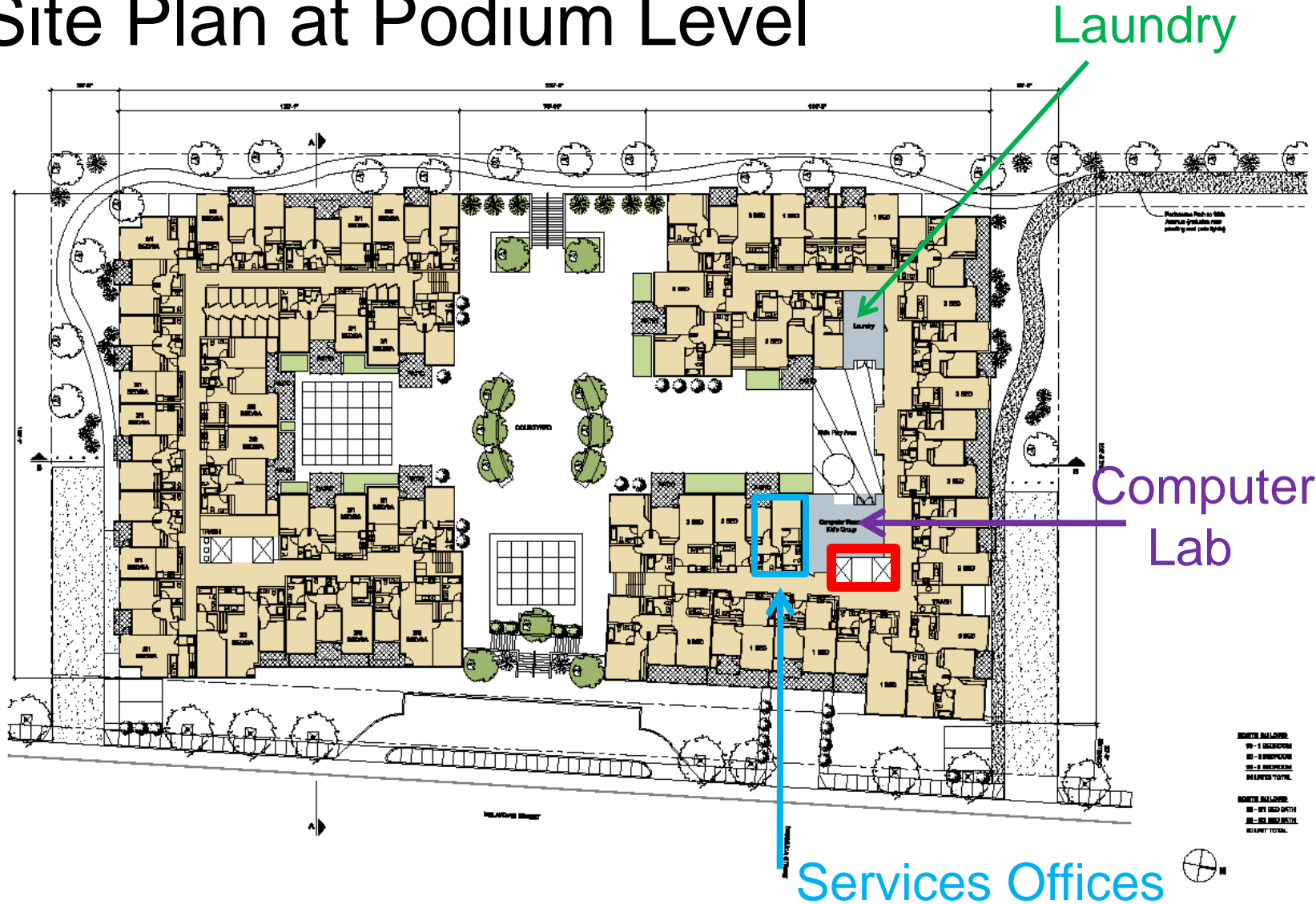


# Site Plan





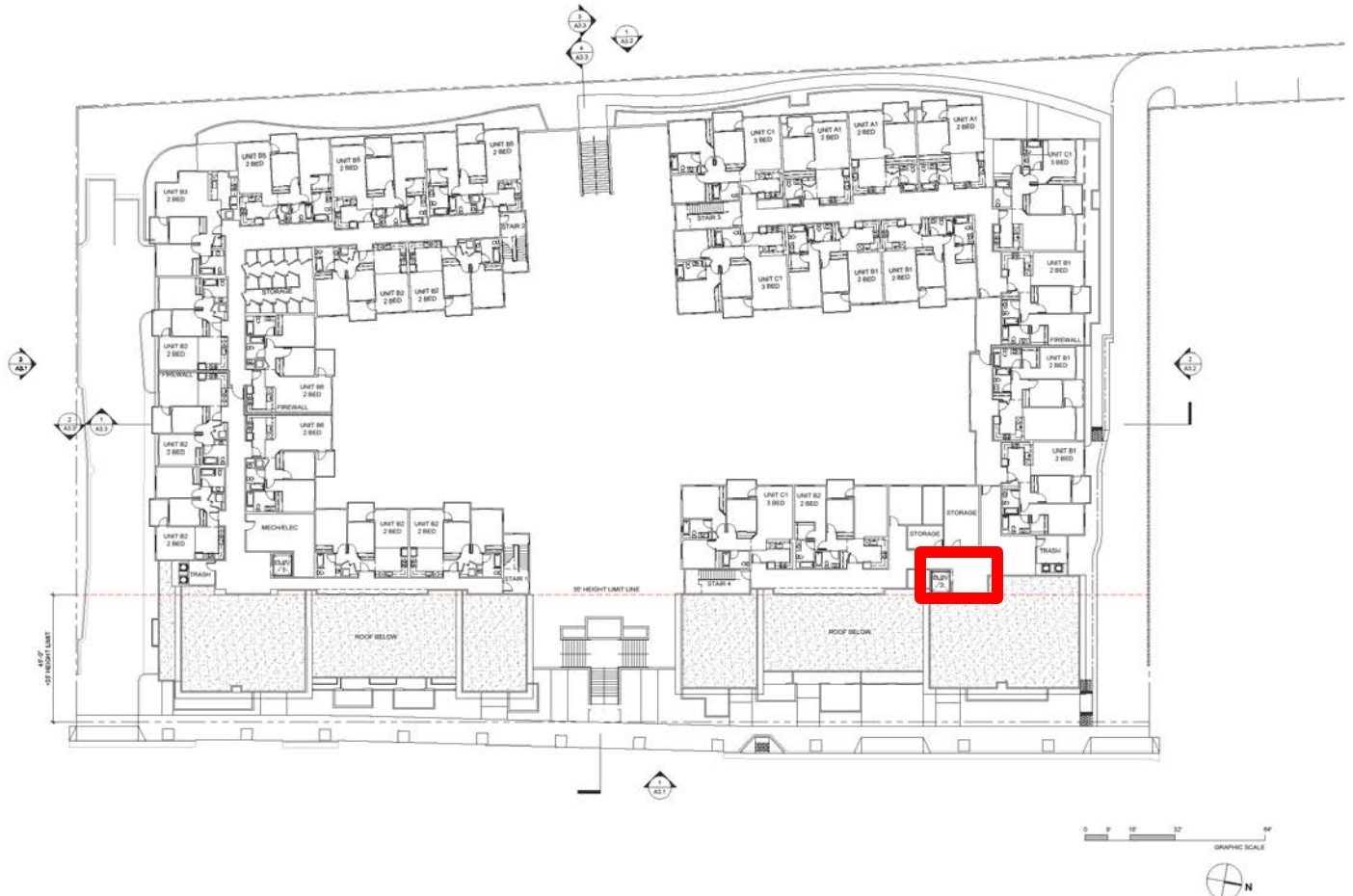
# Site Plan at Podium Level



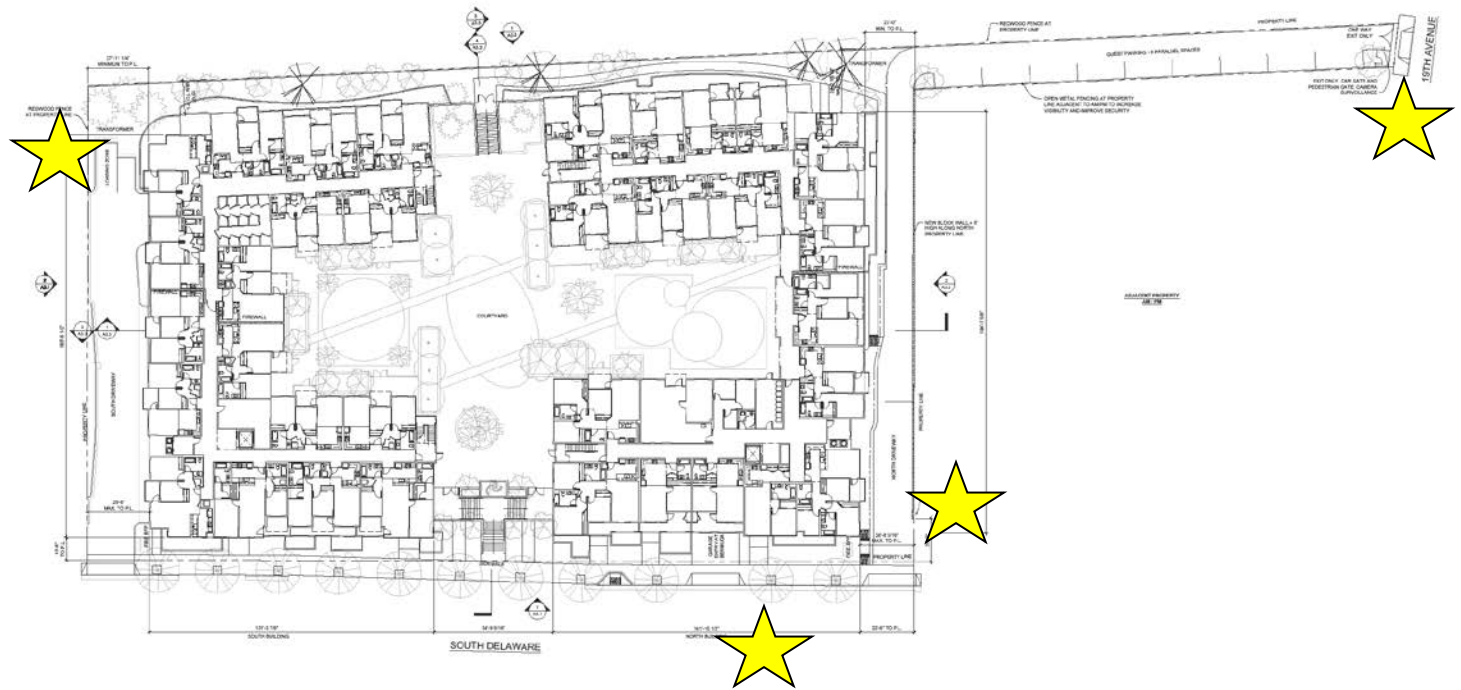




# Site Plan – 3<sup>rd</sup> & 4th floors



# Site Plan – Security Cameras





## Sample Rents

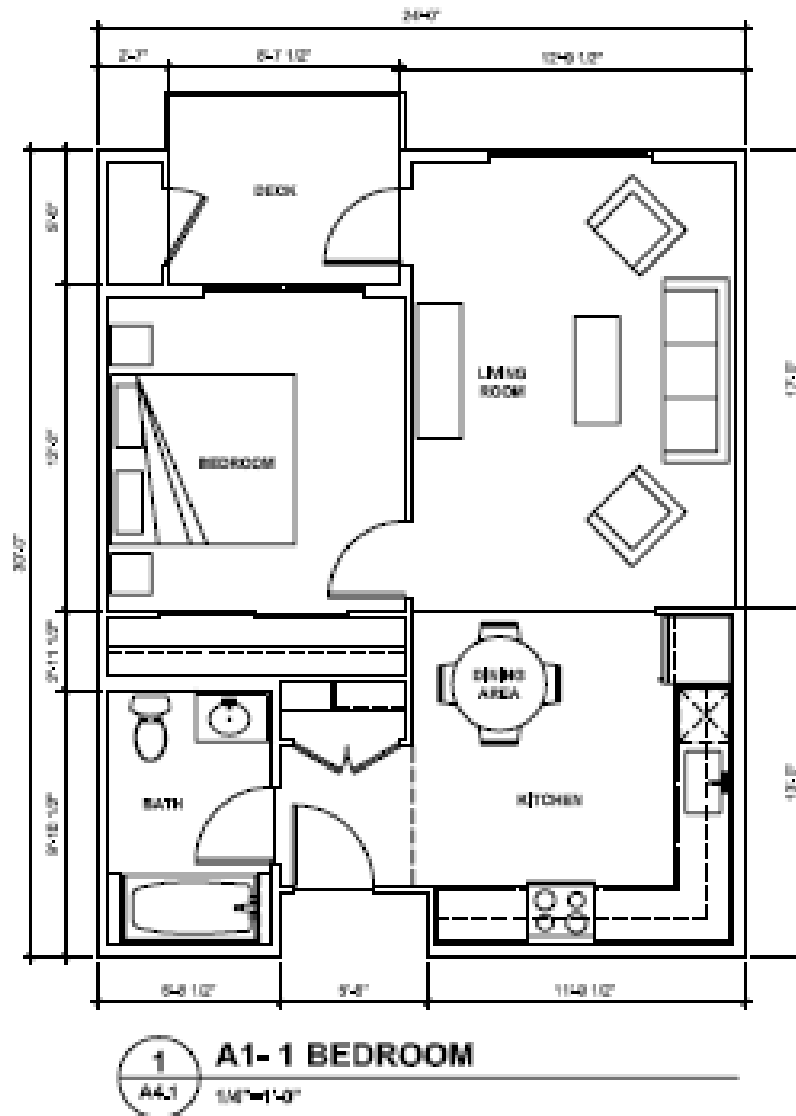
<u># of Units</u>	<u>Unit Type</u>	<u>Rent</u>
18 (4*)	1br/1ba	\$557 - \$921
22 (3*)	2br/2ba	\$614 - \$1,098
<u>20 (3*)</u>	3br/2ba	\$702 - \$1,261
60		

*\*Residents in the MHSA units will receive Section 8 rental assistance. They will contribute no more than 30% of their income towards rent.*

## Unit Types

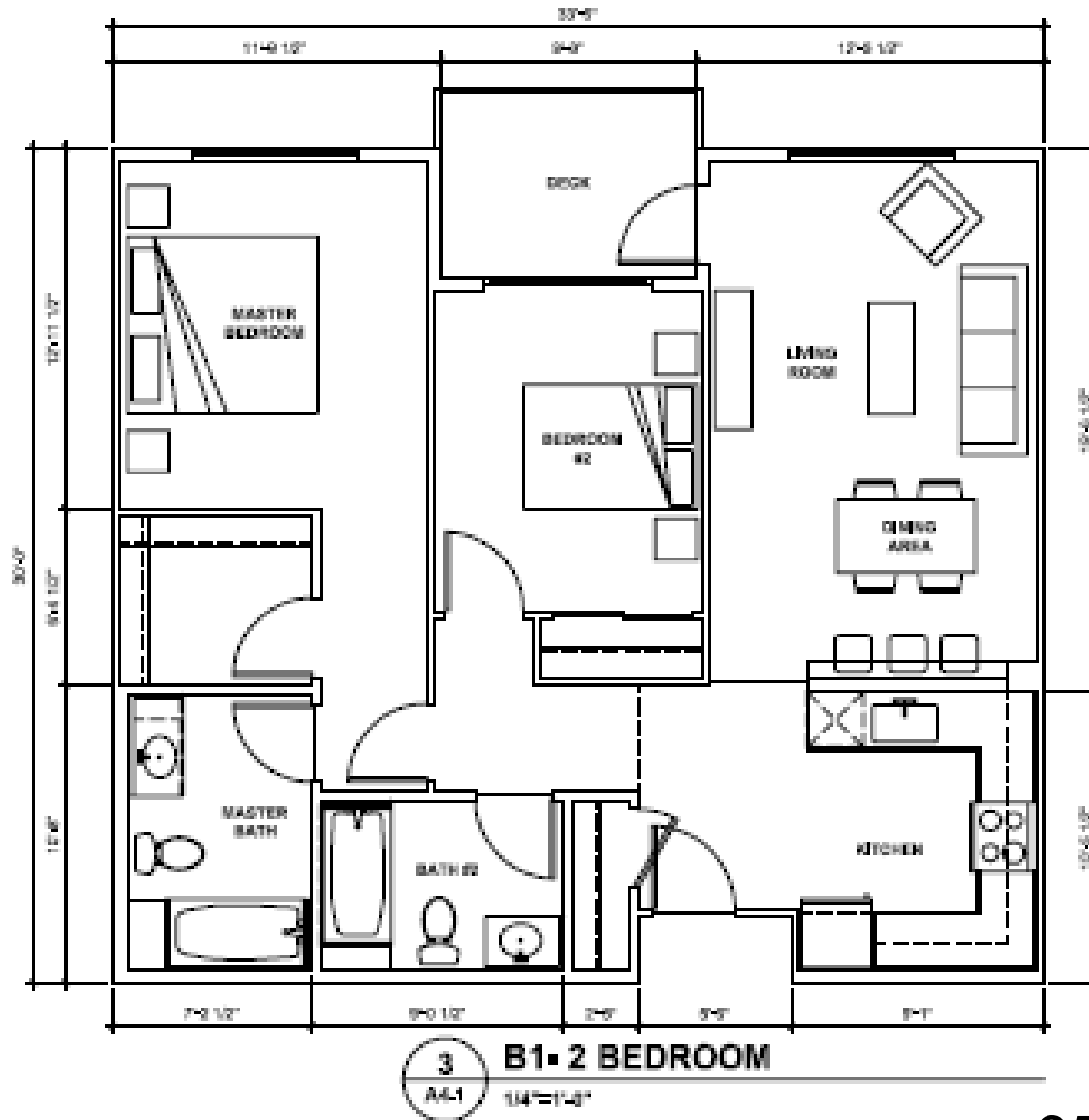
<u># of Units</u>	<u>Unit Type</u>	<u>Size (Sq. Ft.)</u>
18 (4)	1br/1ba	650 – 790
22 (3)	2br/2ba	950
<u>20 (3)</u>	3br/2ba	1,140 – 1,225
60		

WINDOW LOCATIONS VARY. REFER TO BUILDING PLANS.



4 units  
1 accessible/  
3 adaptable

650 – 790 sq. ft.

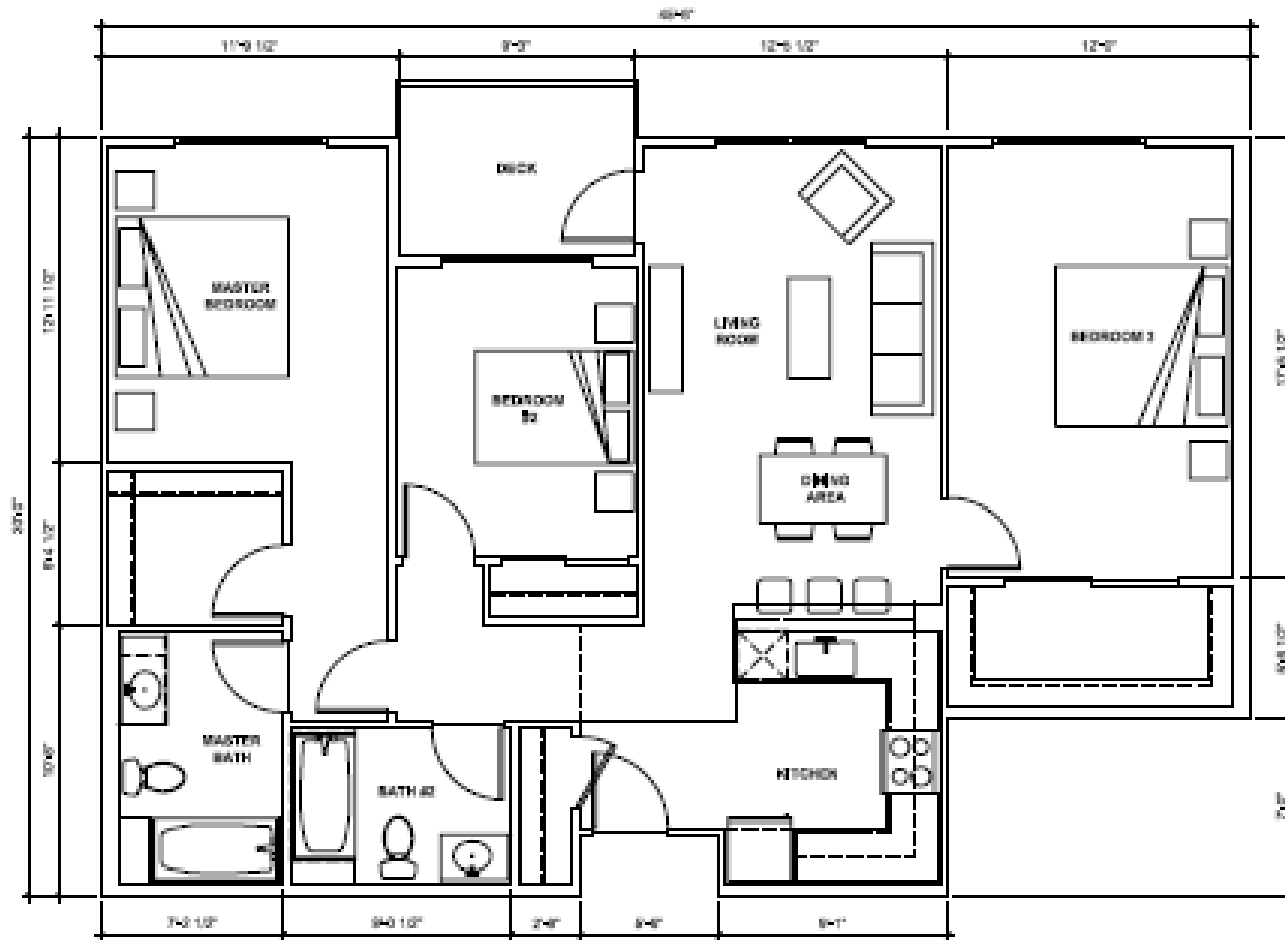


3 units  
 1 accessible/  
 2 adaptable

950 sq. ft.

3 units

1 accessible/  
2 adaptable



**4** C4- 3 BEDROOM  
A4-1 14'-11 1/2"

1,140 – 1,225 sq. ft.

# Resident Services

## Programs:

- Afterschool tutoring and mentoring
- Computer training
- Vocational and career development
- Fitness and health education programs
- Financial literacy classes
- Referrals to social services and benefits
- Volunteer opportunities and training

## Activities:

- Picnics
- Healthy Living Courses
- Holiday Potlucks and Socials
- Neighborhood Awareness Night
- Introduction to Computer Classes



## Resident Services: Integration with Full-Service Partners (FSPs)

- Staffing
- Strategies
- After Hours Assistance

# 2000 S. Delaware St. – Questions?

